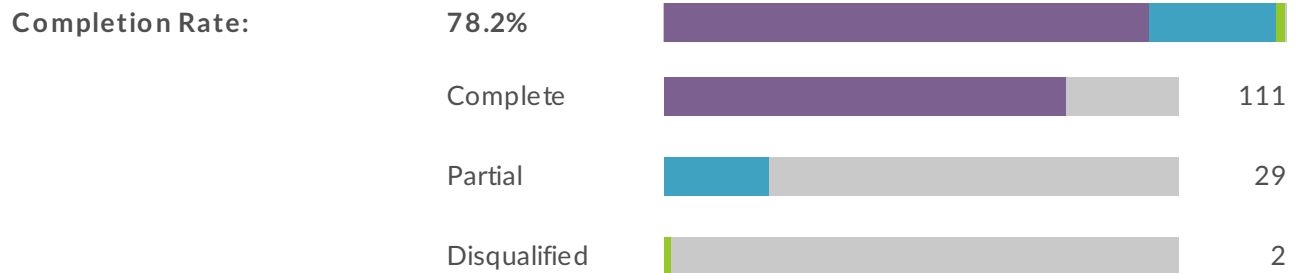


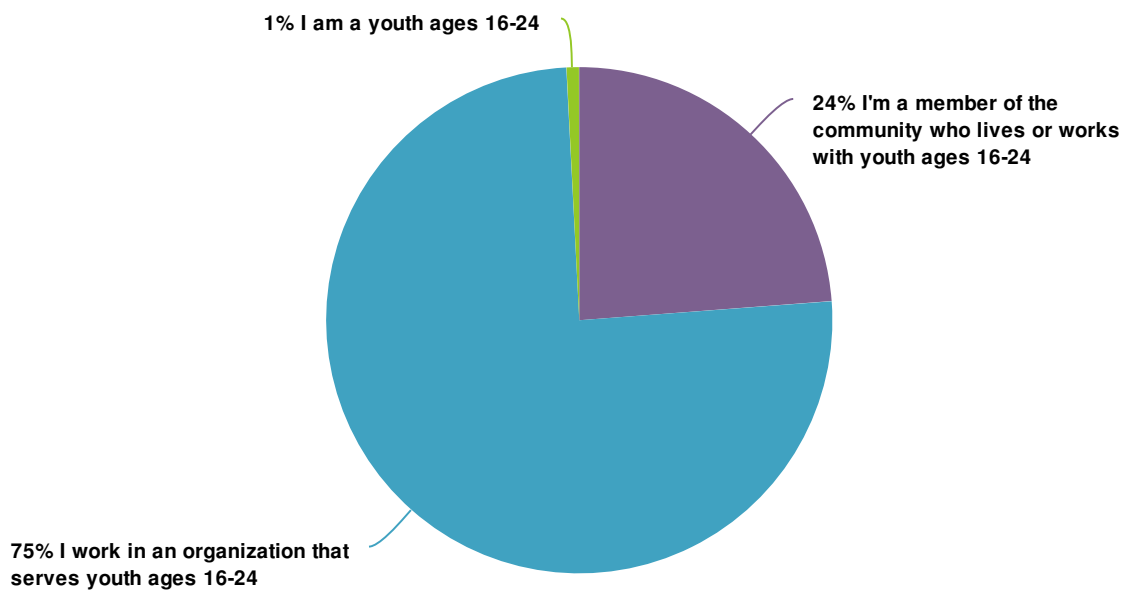
Report for Youth RFP - Community

Response Counts



Totals: 142

1. Which of the following best describes you?

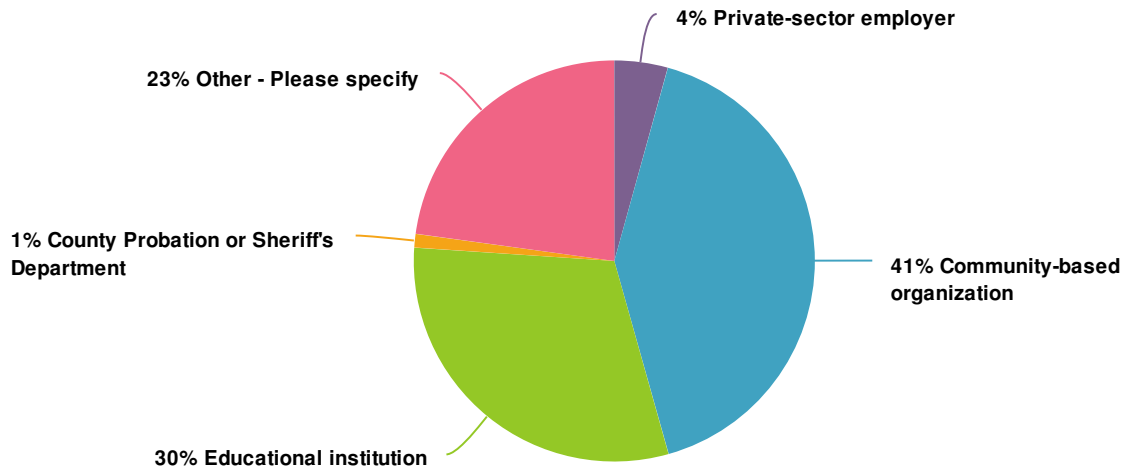


Value	Percent	Responses
I'm a member of the community who lives or works with youth ages 16-24	23.8%	30
I work in an organization that serves youth ages 16-24	75.4%	95
I am a youth ages 16-24	0.8%	1
Totals: 126		

2. What is your job title?

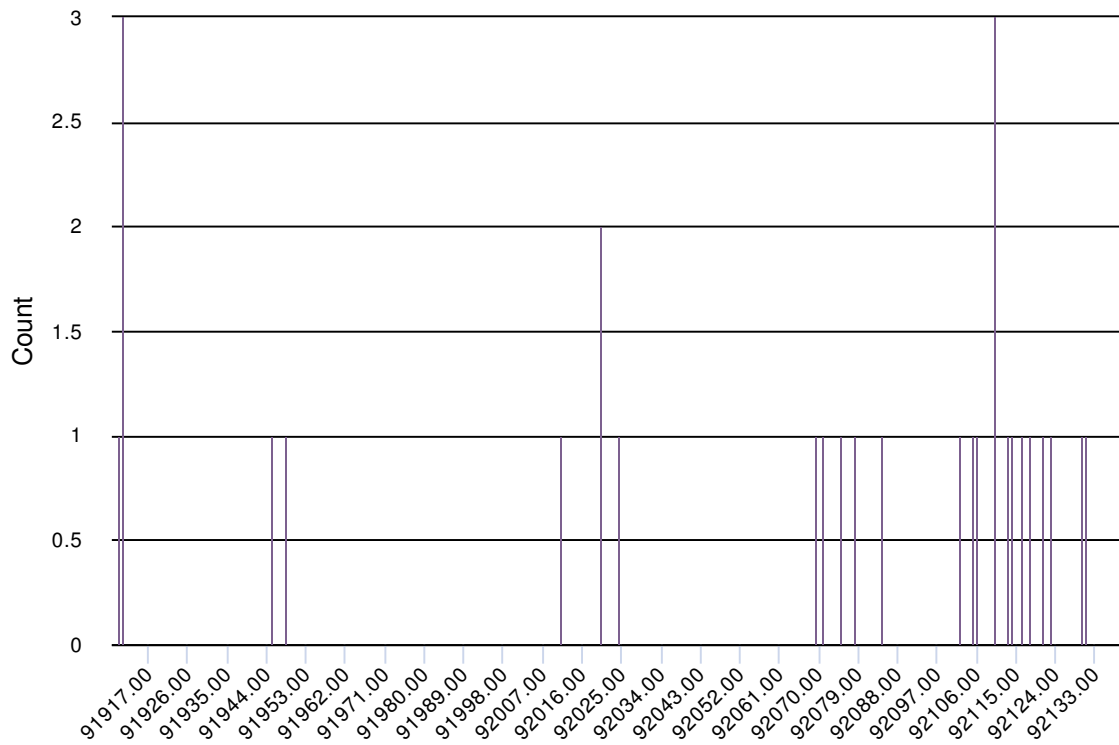


3. What type of organization do you work at?

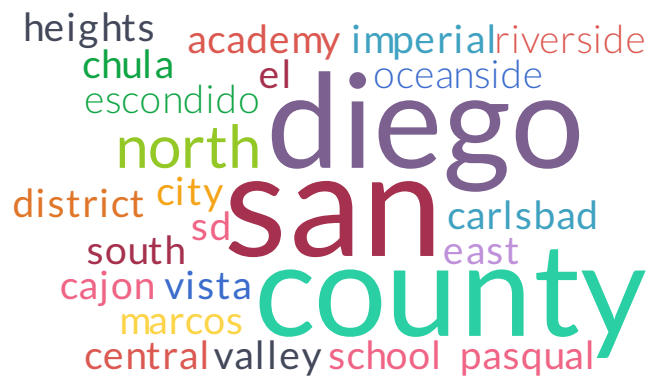


Value	Percent	Responses
Private-sector employer	4.3%	4
Community-based organization	41.3%	38
Educational institution	30.4%	28
County Probation or Sheriff's Department	1.1%	1
Other - Please specify	22.8%	21
		Totals: 92

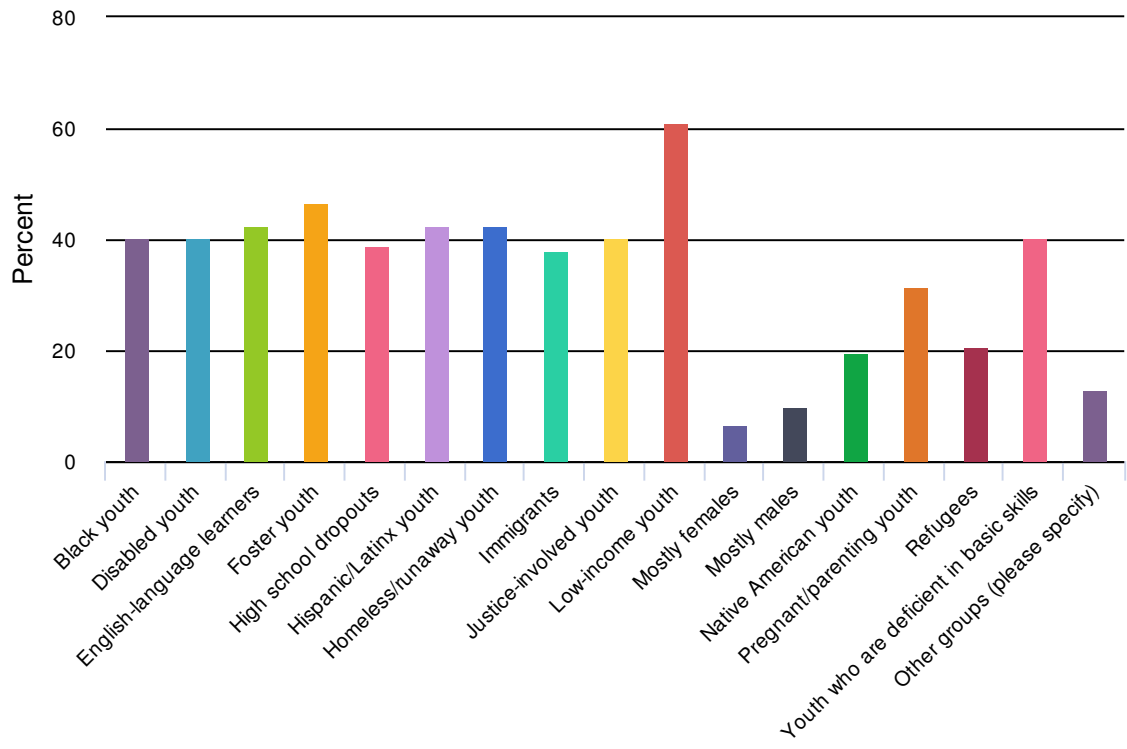
4. Which zip code do you live in?



5. Which locations or communities do you serve? Please list out locations, or provide zip codes

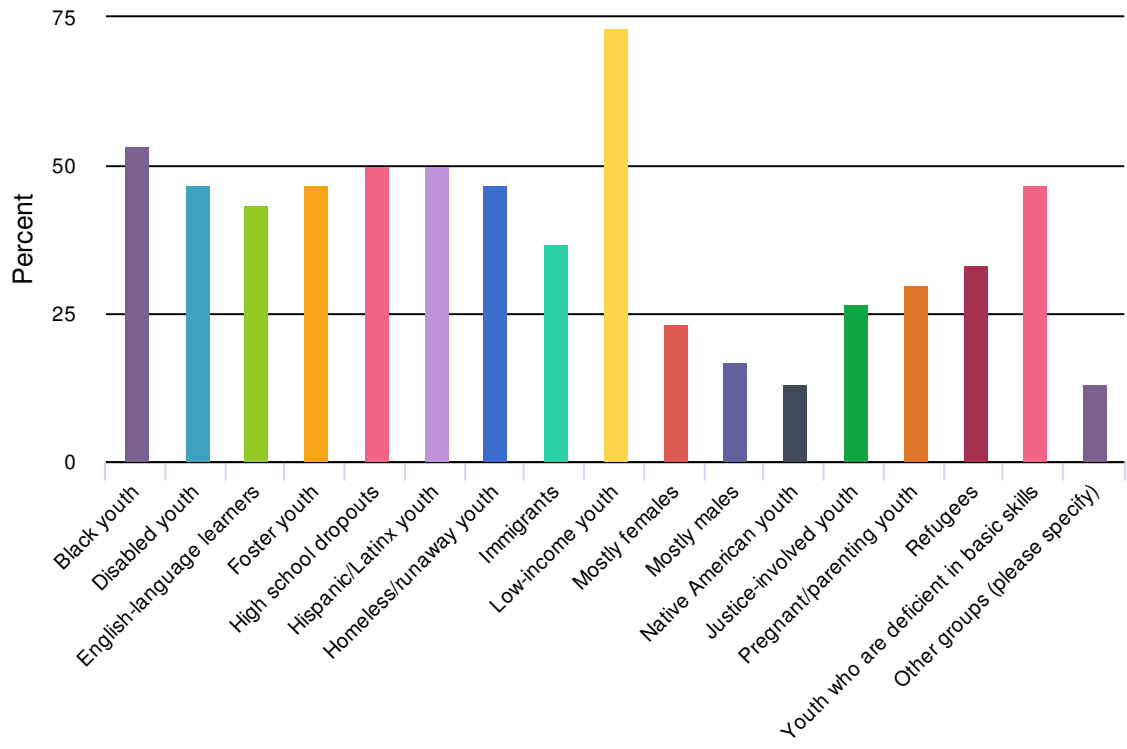







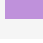











6. For the youth aged 16-24 that you serve, which populations do you focus on?



Value		Percent	Responses
Black youth		40.2%	37
Disabled youth		40.2%	37
English-language learners		42.4%	39
Foster youth		46.7%	43
High school dropouts		39.1%	36
Hispanic/Latinx youth		42.4%	39
Homeless/runaway youth		42.4%	39
Immigrants		38.0%	35
Justice-involved youth		40.2%	37
Low-income youth		60.9%	56
Mostly females		6.5%	6
Mostly males		9.8%	9
Native American youth		19.6%	18
Pregnant/parenting youth		31.5%	29
Refugees		20.7%	19
Youth who are deficient in basic skills		40.2%	37
Other groups (please specify)		13.0%	12

7. Which populations of youth ages 16-24 do you have knowledge or, or experience with?



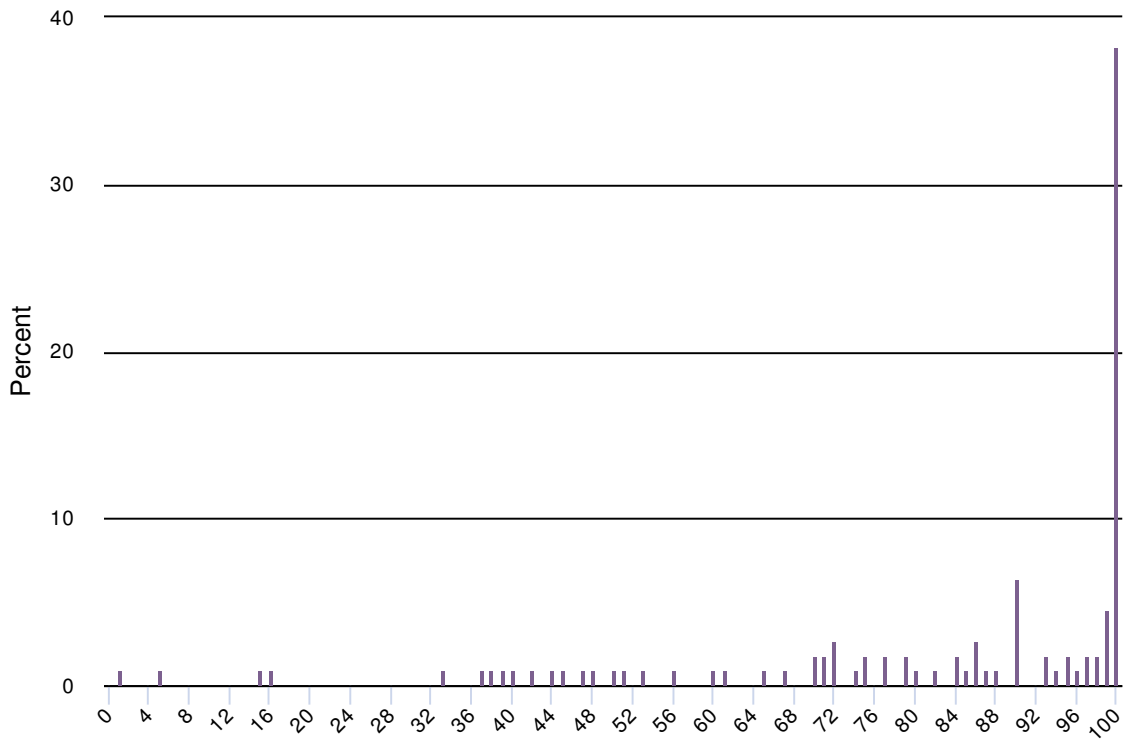
Value		Percent	Responses
Black youth		53.3%	16
Disabled youth		46.7%	14
English-language learners		43.3%	13
Foster youth		46.7%	14
High school dropouts		50.0%	15
Hispanic/Latinx youth		50.0%	15
Homeless/runaway youth		46.7%	14
Immigrants		36.7%	11
Low-income youth		73.3%	22
Mostly females		23.3%	7
Mostly males		16.7%	5
Native American youth		13.3%	4
Justice-involved youth		26.7%	8
Pregnant/parenting youth		30.0%	9
Refugees		33.3%	10
Youth who are deficient in basic skills		46.7%	14
Other groups (please specify)		13.3%	4

8. About what percent of the youth you serve are in school?

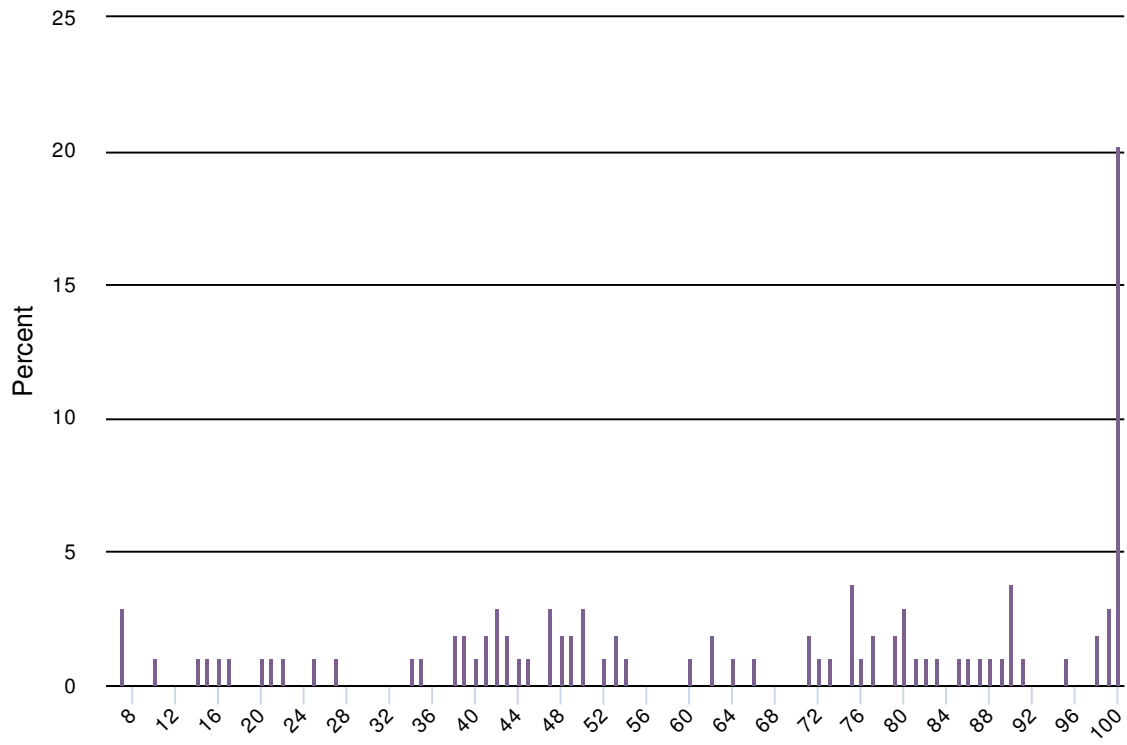


9. How important are each of the following program elements for the youth you're engaged with?

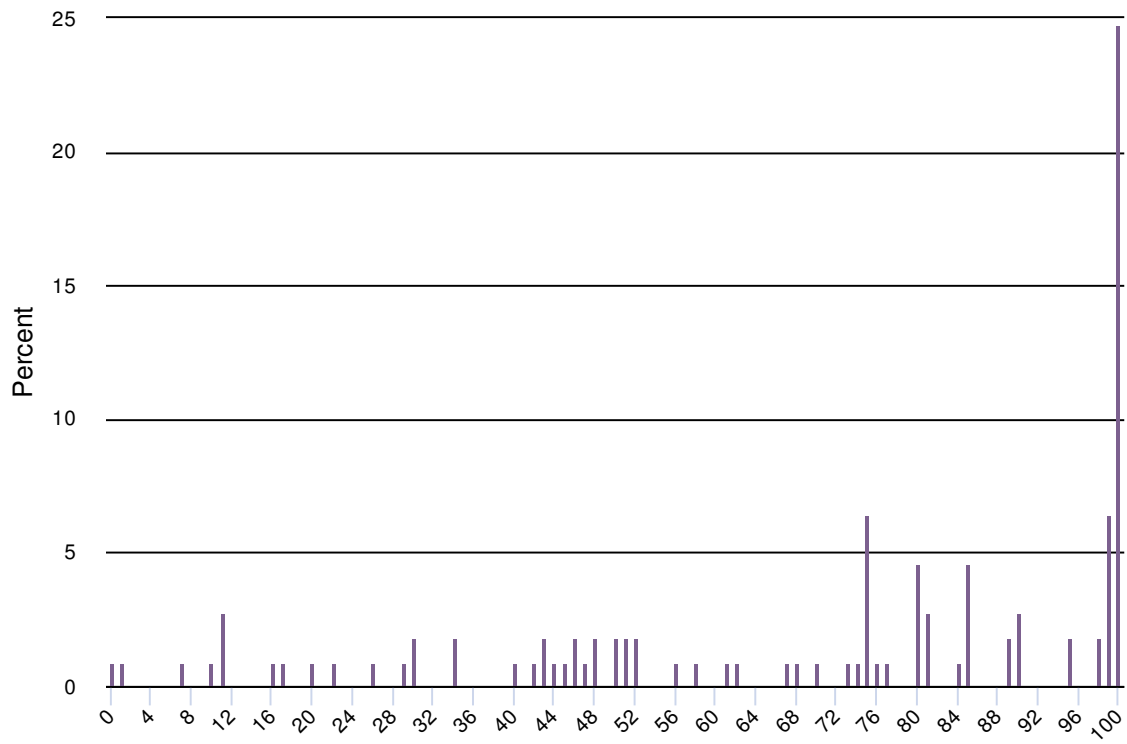
School enrollment (high school, GED, higher ed, etc.)



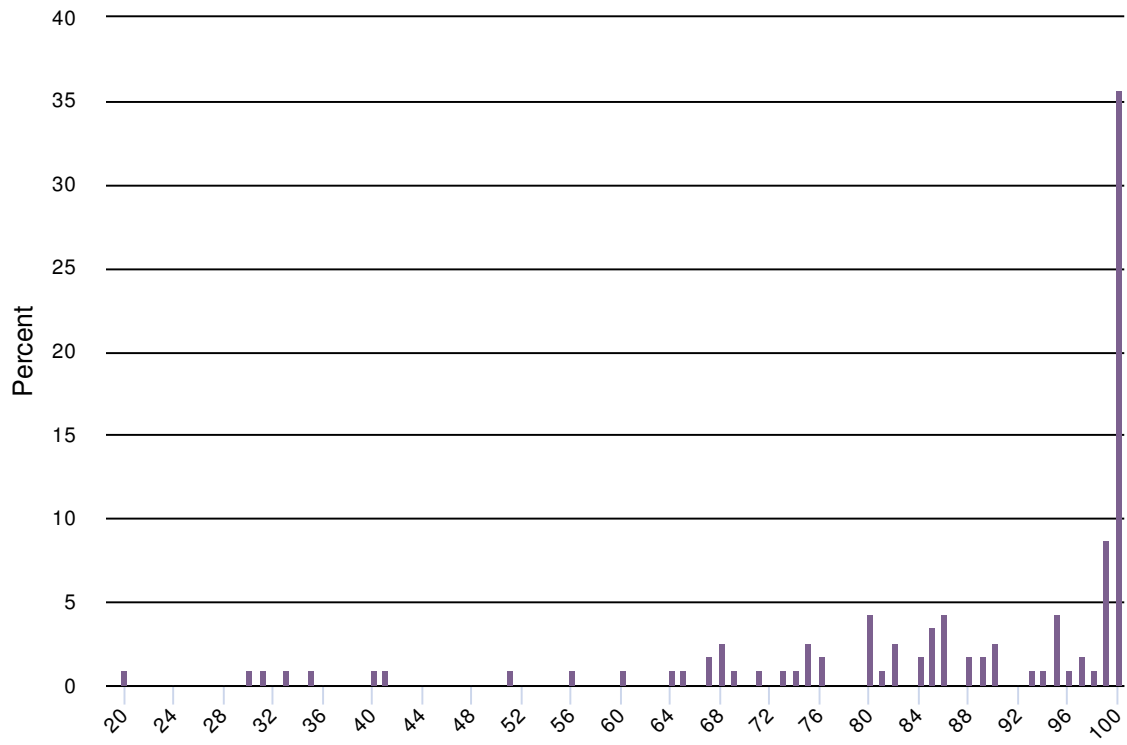
Tutoring



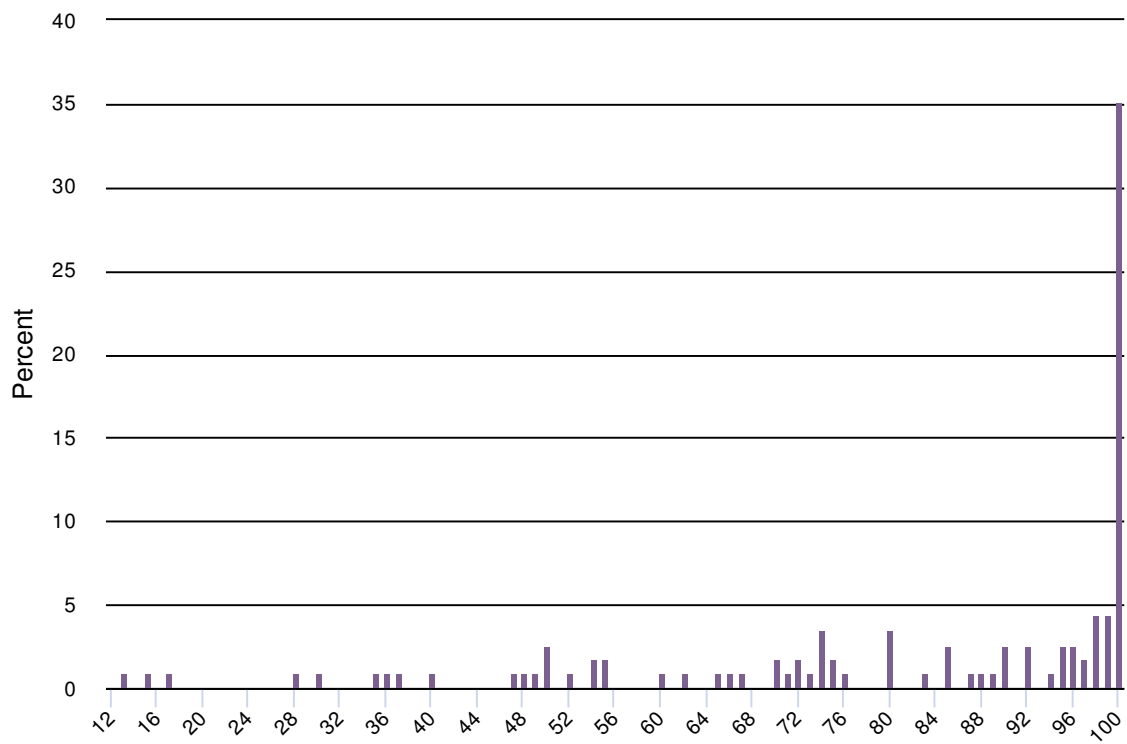
Help with college apps, financial aid



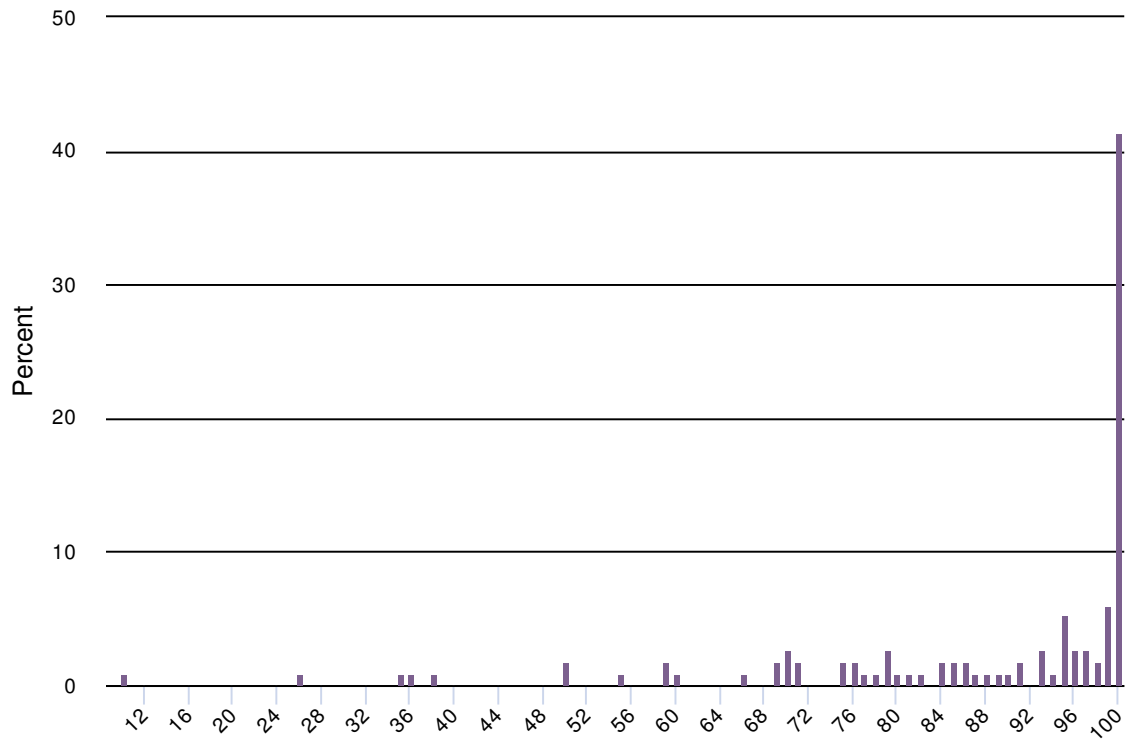
Career counseling/exploration



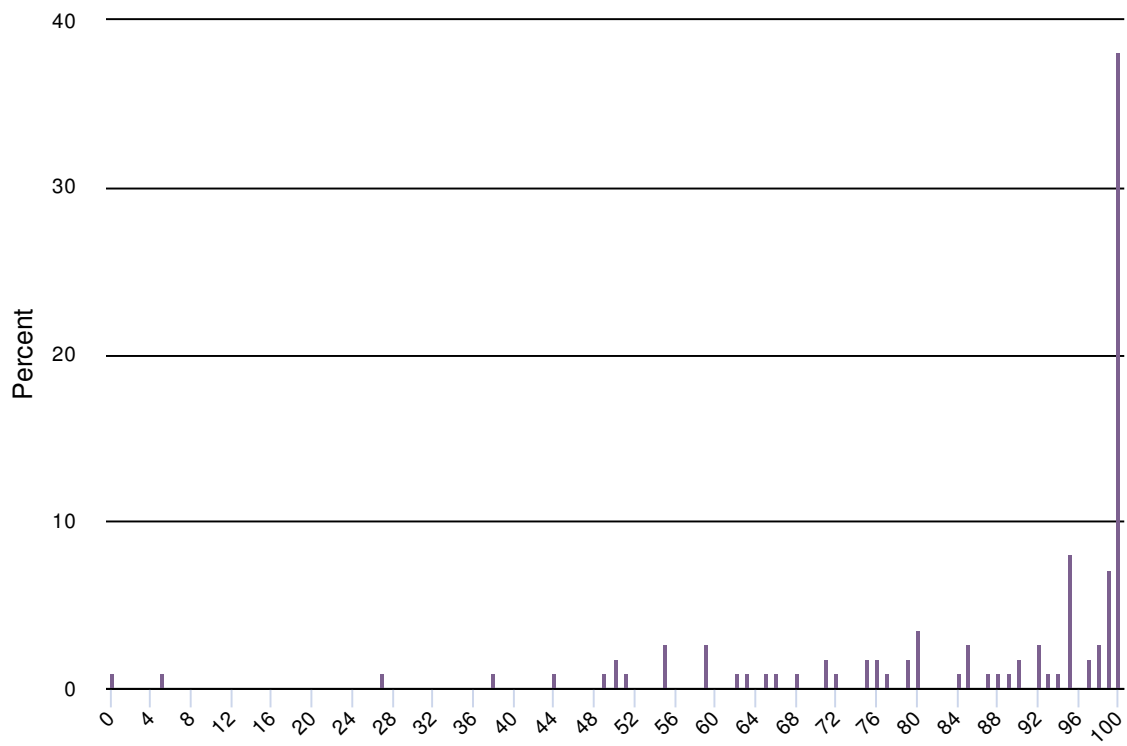
Help with resumes, interview prep, etc.



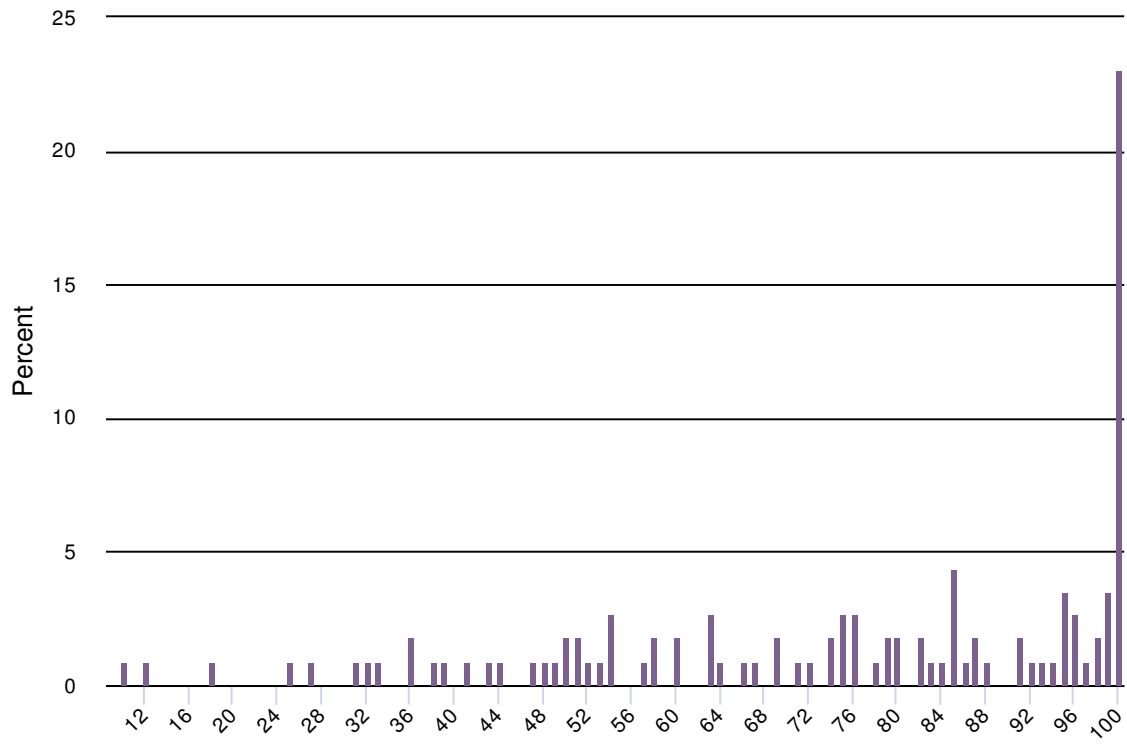
Job skills training (including apprenticeships)



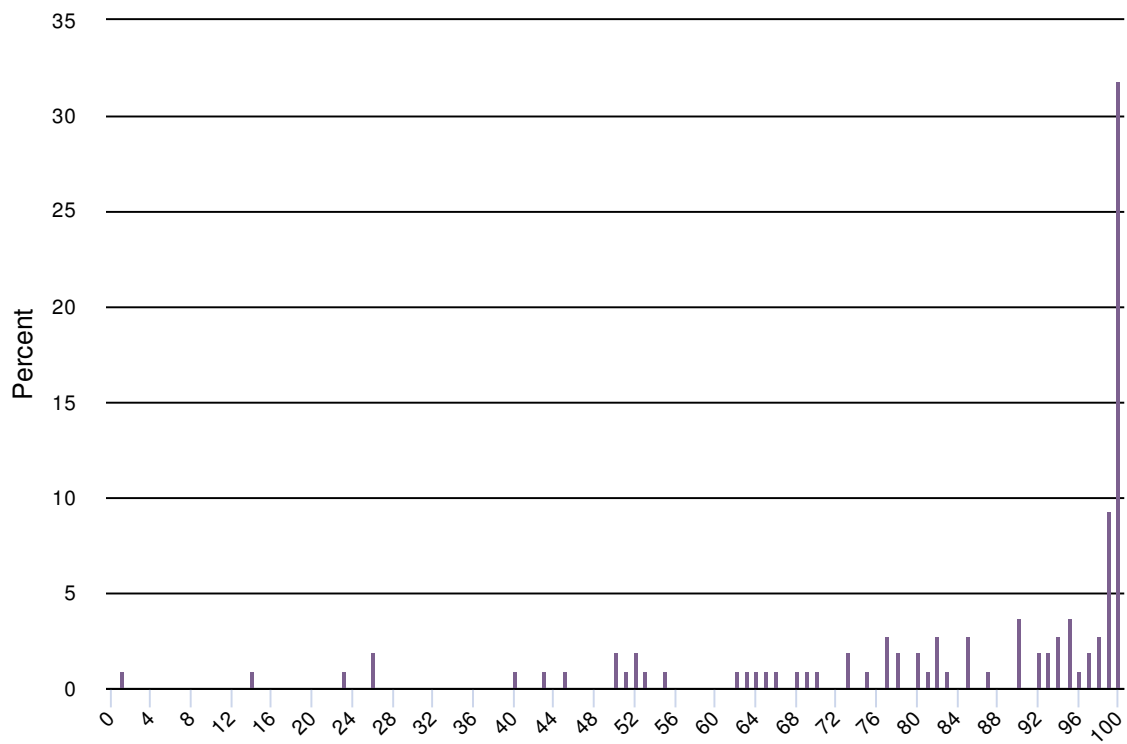
Work experience



Mentoring

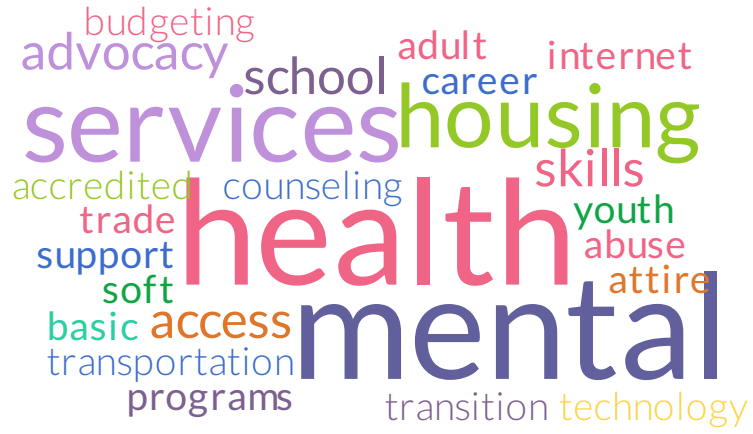


Supportive services (housing, transport, childcare, financial counseling, health, etc)



10. If there are additional services that these youth need, please list the top three:

Service 1



Service 2



Service 3



11. What organizations do you rely on or collaborate with to serve these youth?



12. Who do you wish you could collaborate with?

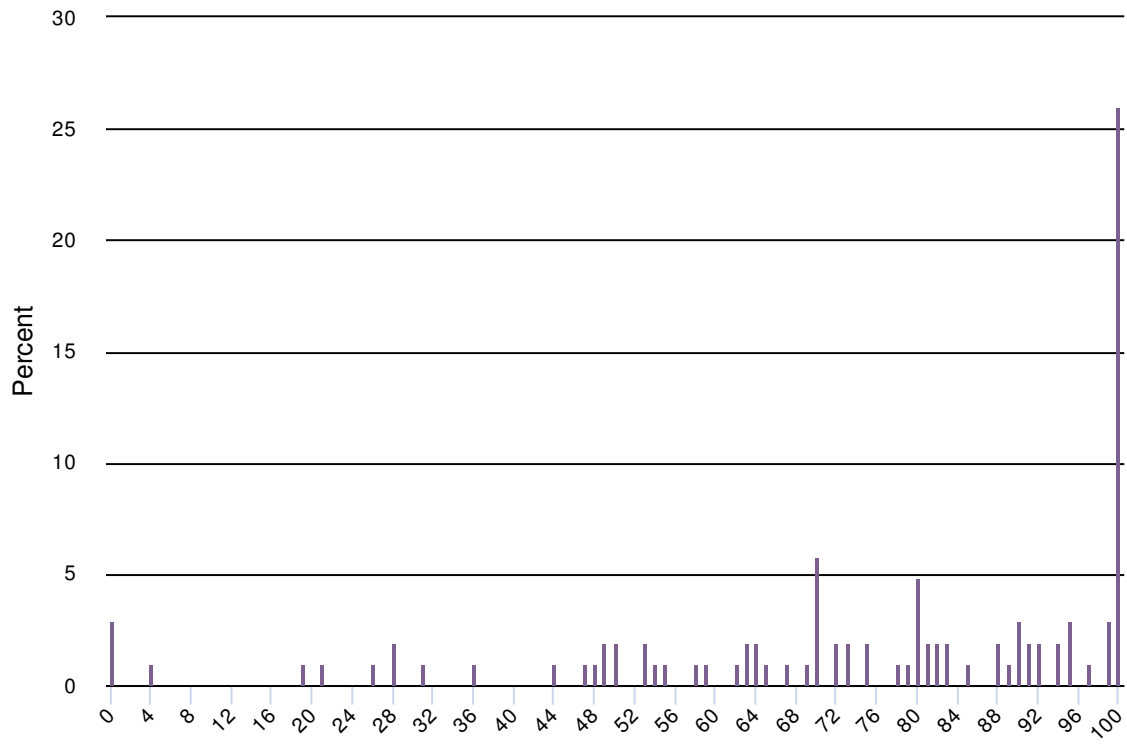


13. If you provide referrals, how do you do this?

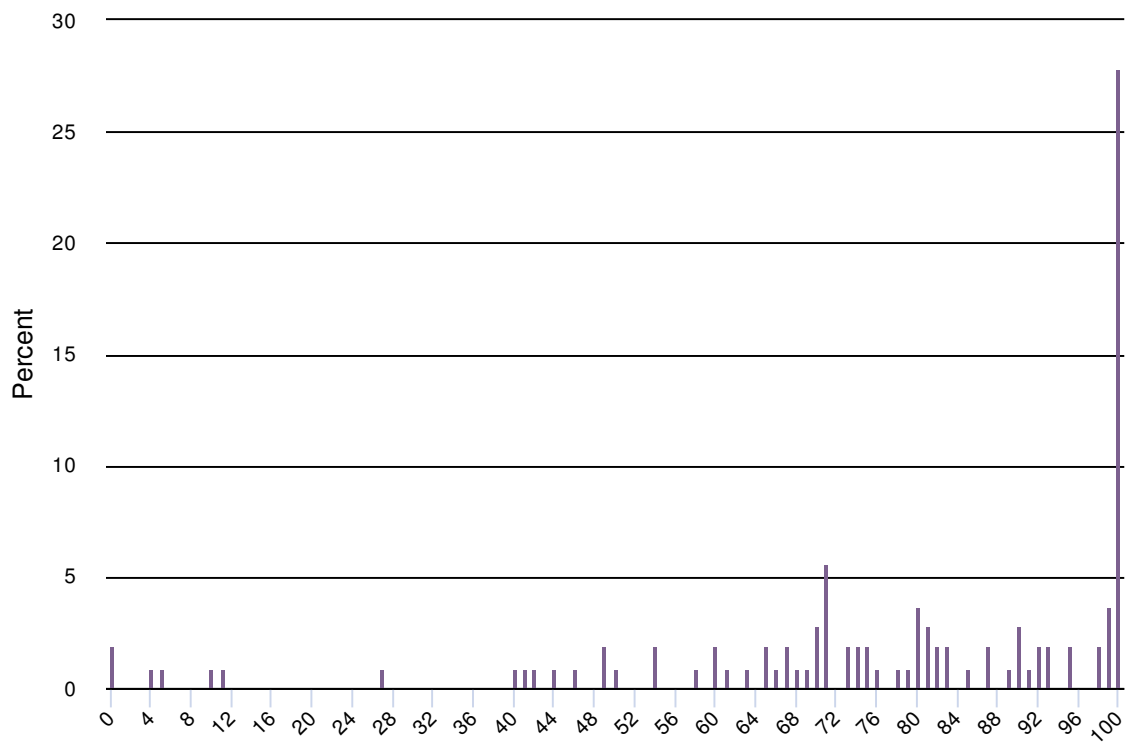


14. How achievable are each of the following goals for the population you serve?

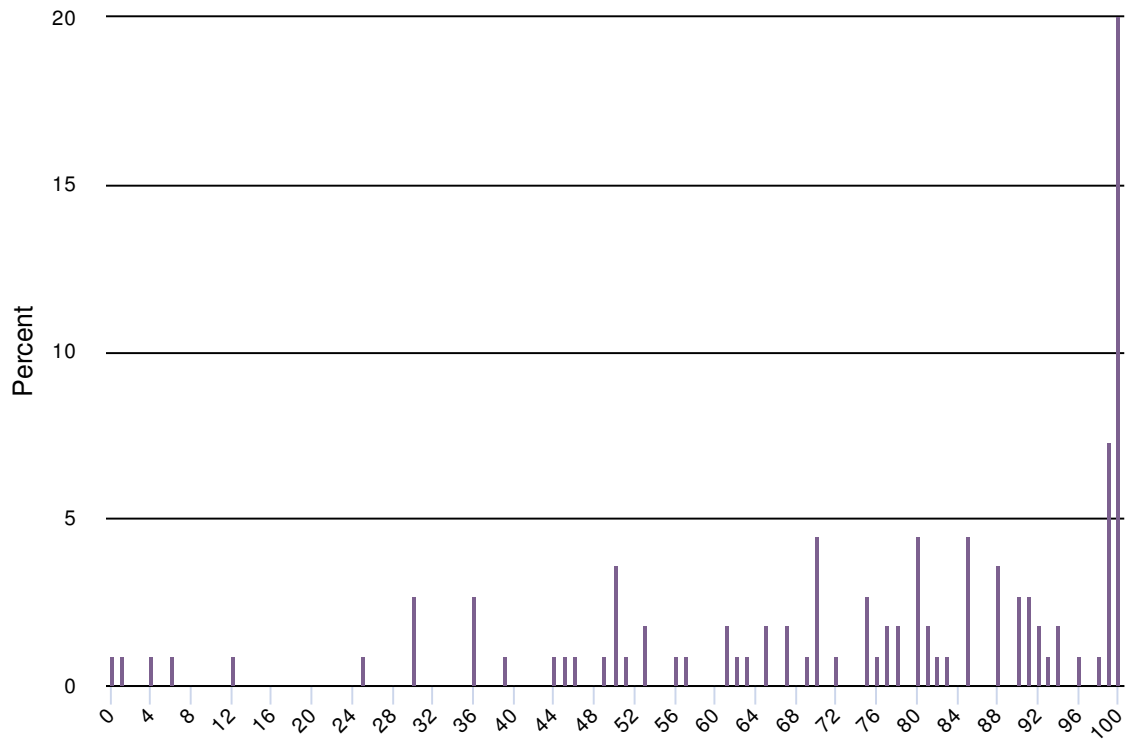
Reconnection/placement in secondary (high) school



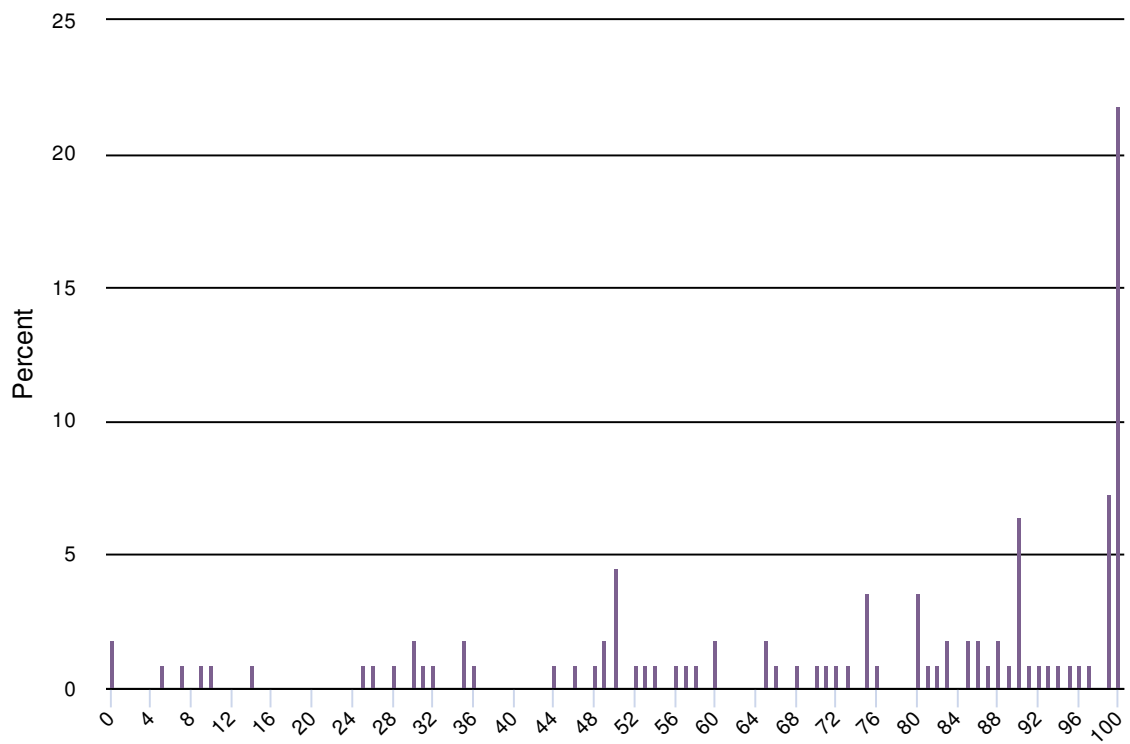
Attainment of HS diploma



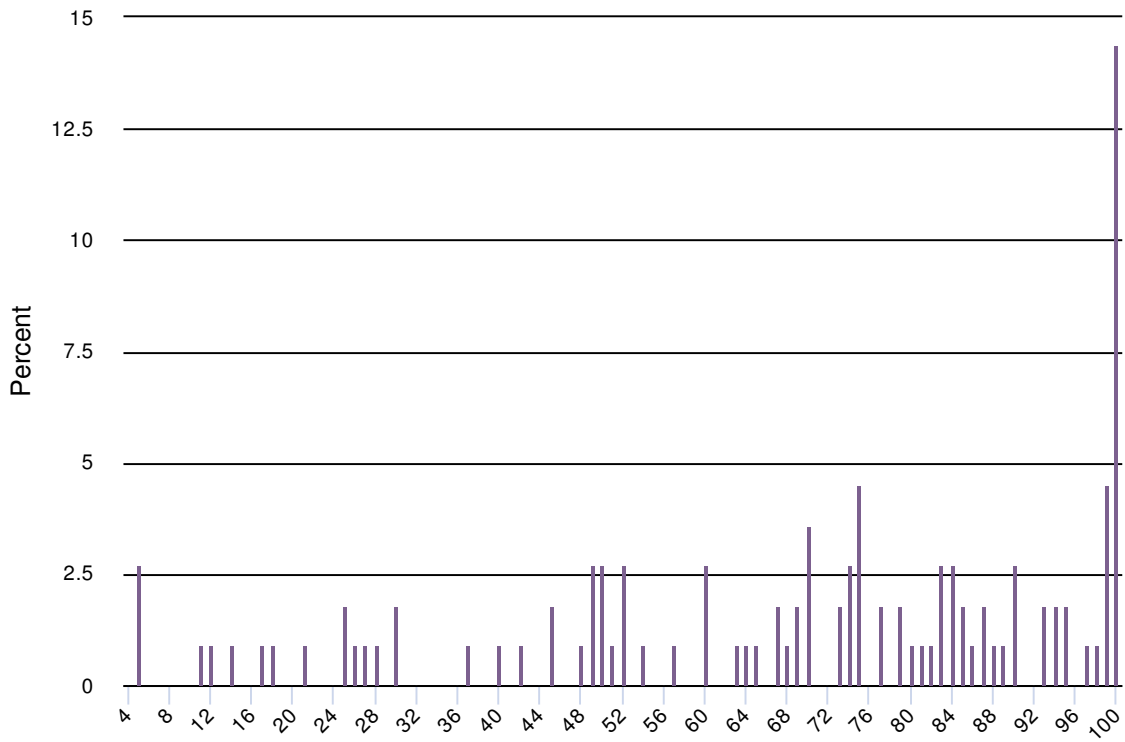
Placement in training (apprenticeship, on the job, or other training)



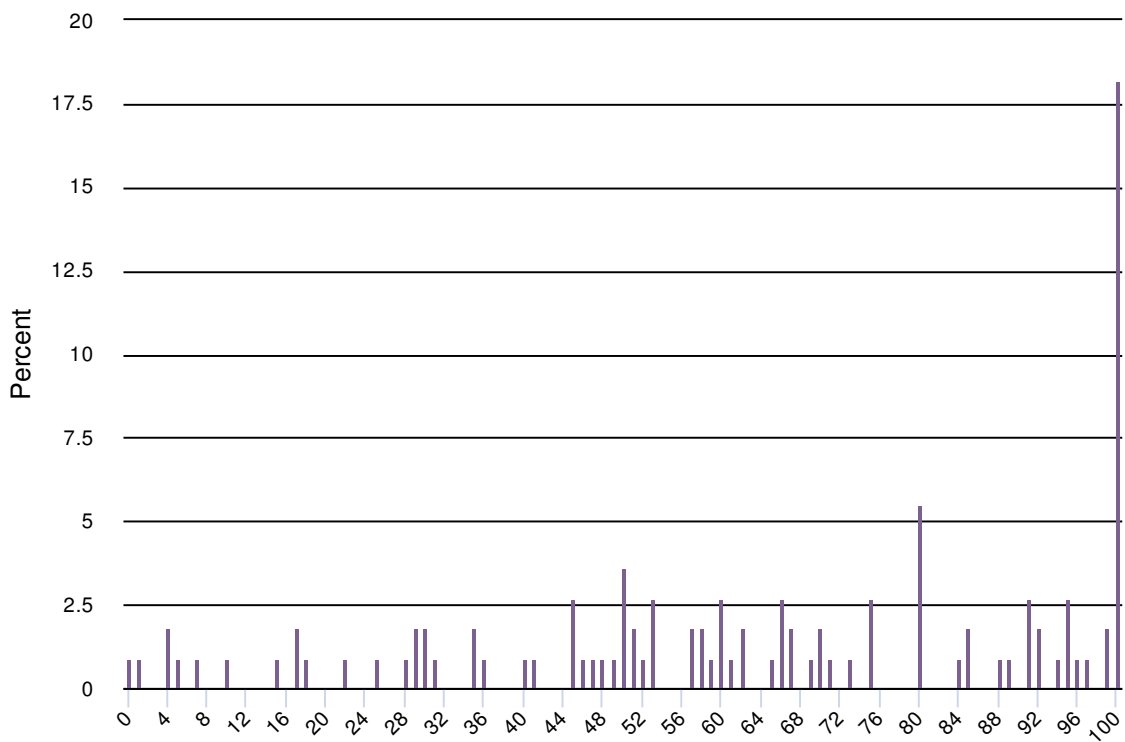
Placement in part time employment



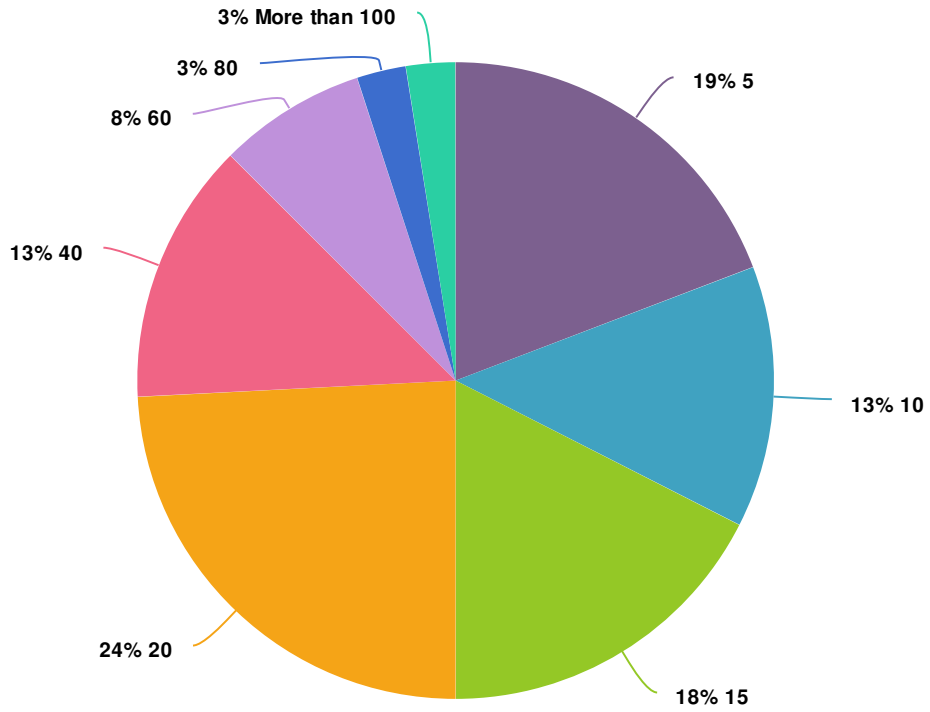
Attainment of a credential from training



Attainment of post-secondary credential, degree, certificate



15. About how many youth in your population do you think that a single person can serve -- by providing 1-on-1 services -- effectively?



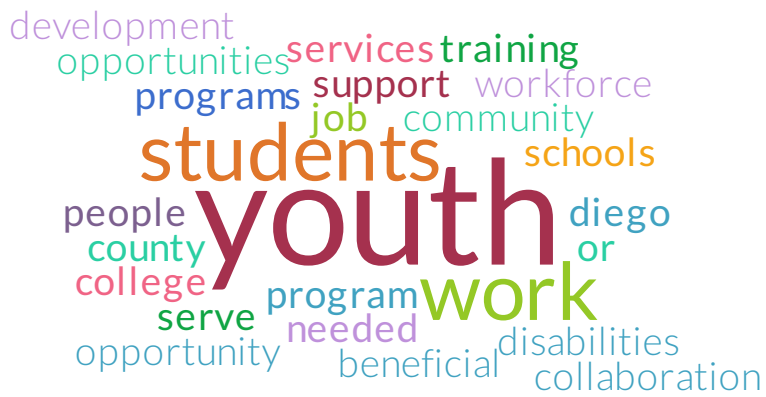
Value	Percent	Responses
5	19.2%	23
10	13.3%	16
15	17.5%	21
20	24.2%	29
40	13.3%	16
60	7.5%	9
80	2.5%	3
More than 100	2.5%	3

Totals: 120

16. In your organization, about how many individuals does a single person serve?



17. Please share any additional comments that you have for us



18. Would you be willing for us to contact you with follow up questions? If so, please provide your email address and organization you work for

Name

barron becker bennion
bustos alex alexander
burritt jennifer adriana
agnes brown amy
alon diana anna
browne aron barber
rebecca daniel
asaro amber becky balderas
berkowitz

Email

beaconsnorthcounty.com bennion.rebecca
anna.glassey aortega001 ca.us
cccs.education ymca.org
becky sdccd.edu acaillouette
apritchard@gmail.com agnes
arizkallinterfaithservices.org
cbaldera dor.ca.gov sdcoe.net cdunton
alexander.becker sdcounty.ca.gov
bgcvista.com avenegas athenaracing.org
bgcoceanside.org

Organization name

rehabilitation development district
collaborative services
county diego
college
boys adult san interfaith
girls amp office
high community school
academy charter
foundation education department
mesa institute