

Advanced Manufacturing

A PRIORITY SECTOR in San Diego County



San Diego
Workforce
Partnership

This sector combines fields like engineering, computer drafting, biotech and more to design and build our future.



Scan to take a quiz and learn how your interests align with San Diego jobs!

#mynextmove

Sample occupations

How much will I earn per hour?

Entry level 10th percentile Mid-career 50th percentile Experienced 90th percentile

What level of education is expected by employers?

R Realistic	The Doers People who enjoy working outdoors and have athletic or mechanical abilities	Aircraft Mechanics and Service Technicians diagnose, adjust, repair or overhaul aircraft engines and assemblies.	\$25 — \$31 — \$40	2 caps
I Investigative	The Thinkers People who use investigative and analytics skills to gather facts	Industrial Engineers design, develop, test and evaluate ways to manage industrial production processes.	\$31 — \$45 — \$66	3 caps
A Artistic	The Creators People who prefer to work in creative, unstructured settings and use their artistic abilities	Commercial and Industrial Designers combine artistic talent with research on product use, marketing and materials to create the most functional and appealing product design.	\$17 — \$34 — \$66	3 caps
S Social	The Helpers People who enjoy working with others	Customer Service Representatives interact with customers to provide solutions to questions and problems they may have.	\$12 — \$17 — \$28	1 cap
E Enterprising	The Persuaders People who like to lead and influence others to work towards organization goals	First-Line Supervisors of Production and Operating Workers supervise and coordinate the activities of production workers, such as inspectors, precision workers and machine setters.	\$19 — \$32 — \$52	1 cap
C Conventional	The Organizers People who enjoy working with data, keeping organized, and using their numerical abilities	Statisticians develop and apply mathematical or statistical theory to understanding the world's most interesting and challenging questions.	\$34 — \$53 — \$73	4 caps

4 caps Doctoral degree

3 caps Master's or professional degree

2 caps Bachelor's degree

1 cap Associate degree or certificate

0 caps High school diploma or less

Educational levels are typical but not meant to mean they are the minimum requirement.

To explore, visit workforce.org/mynextmove



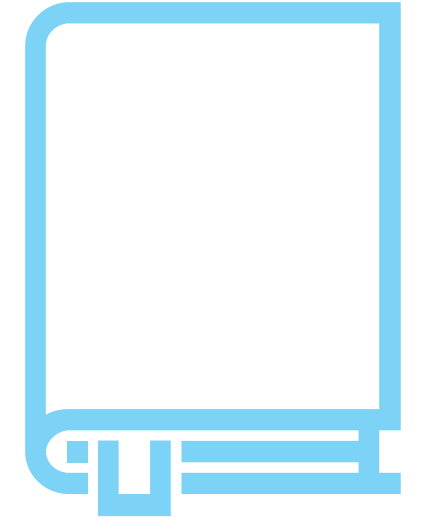
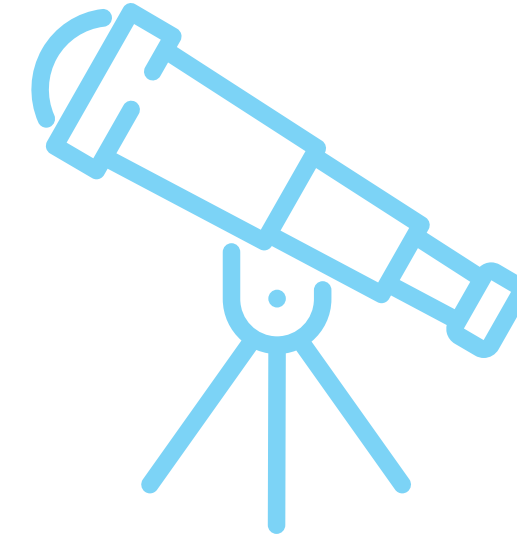
Education & Human Development

A PRIORITY SECTOR in San Diego County



San Diego
Workforce
Partnership

Whether it's teaching at a daycare, working at a school or educating communities about health resources, people in this sector help others access their personal freedom to decide who to be, what to do and how to live.



Scan to take a quiz and learn how your interests align with San Diego jobs!

#mynextmove

Sample occupations

How much will I earn per hour?

Entry level 10th percentile Mid-career 50th percentile Experienced 90th percentile

What level of education is expected by employers?

R Realistic	The Doers People who enjoy working outdoors and have athletic or mechanical abilities	Athletic Trainers evaluate and advise individuals to assist recovery from or avoid athletic-related injuries or illnesses or maintain peak physical fitness.	\$18 — \$28 — \$39	4 graduation caps
I Investigative	The Thinkers People who use investigative and analytics skills to gather facts	Computer User Support Specialists answer questions or resolve computer problems for clients in person, via telephone or electronically.	\$18 — \$28 — \$43	2 graduation caps
A Artistic	The Creators People who prefer to work in creative, unstructured settings and use their artistic abilities	Child Care Workers attend to children at schools, businesses, private households and child care institutions.	\$4 — \$12 — \$19	1 graduation cap
S Social	The Helpers People who enjoy working with others	Respiratory Therapists assess, treat and care for patients with breathing disorders.	\$28 — \$38 — \$49	2 graduation caps
E Enterprising	The Persuaders People who like to lead and influence others to work towards organization goals	Fundraisers organize activities to raise funds or otherwise solicit and gather monetary donations or other gifts for an organization.	\$13 — \$24 — \$46	3 graduation caps
C Conventional	The Organizers People who enjoy working with data, keeping organized, and using their numerical abilities	Education Administrators, Post-secondary plan, direct or coordinate research, instructional, student administration services and other educational activities at post-secondary institutions.	\$30 — \$53 — \$94	5 graduation caps

4 graduation caps Doctoral degree

3 graduation caps Master's or professional degree

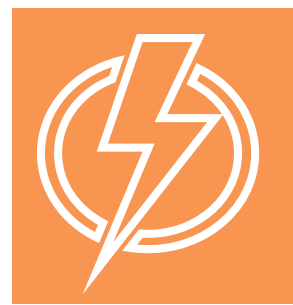
2 graduation caps Bachelor's degree

1 graduation cap Associate degree or certificate

1 graduation cap High school diploma or less

Educational levels are typical but not meant to mean they are the minimum requirement.

To explore, visit workforce.org/mynextmove



Energy, Construction & Utilities

A PRIORITY SECTOR in San Diego County



San Diego
Workforce
Partnership

This sector creates the physical places people live, work and enjoy—from the four walls of a building to the wiring and power that make it possible to offer free wifi.



#mynextmove

Scan to take a quiz and learn how your interests align with San Diego jobs!

Sample occupations

How much will I earn per hour?

Entry level 10th percentile Mid-career 50th percentile Experienced 90th percentile

What level of education is expected by employers?

Interest Type	Occupation	Entry level 10 th percentile	Mid-career 50 th percentile	Experienced 90 th percentile	Education Level
R Realistic The Doers People who enjoy working outdoors and have athletic or mechanical abilities	Electrical Power-Line Installers and Repairers install or repair cables or wires used in electrical power or distribution systems.	\$25	\$46	\$62	High school diploma or less
I Investigative The Thinkers People who use investigative and analytics skills to gather facts	Structural Iron and Steel Workers work with iron and steel to form completed structures or structural frameworks.	\$18	\$34	\$49	High school diploma or less
A Artistic The Creators People who prefer to work in creative, unstructured settings and use their artistic abilities	Interior Designers plan, design and furnish interiors of residential, commercial or industrial buildings.	\$10	\$27	\$57	Bachelor's degree
S Social The Helpers People who enjoy working with others	Training and Development Specialists design and conduct training and development programs to improve individual and organizational performance.	\$19	\$33	\$49	Bachelor's degree
E Enterprising The Persuaders People who like to lead and influence others to work towards organization goals	Hydroelectric Production Managers manage operations at hydroelectric power generation facilities.	\$32	\$49	\$95	Associate degree or certificate
C Conventional The Organizers People who enjoy working with data, keeping organized, and using their numerical abilities	City & Regional Planning Aides compile data from various sources, such as maps, reports and field and file investigations, for use by city planners in making planning studies.	\$28	\$42	\$60	Bachelor's degree

🎓🎓🎓🎓 Doctoral degree

🎓🎓🎓 Master's or professional degree

🎓🎓 Bachelor's degree

🎓 Associate degree or certificate

🎓 High school diploma or less

Educational levels are typical but not meant to mean they are the minimum requirement.

To explore, visit workforce.org/mynextmove



Health Care

A PRIORITY SECTOR in San Diego County



San Diego
Workforce
Partnership

At the intersection of technology, science and empathy lies health care, where people work to keep the public healthy and well, quickly solving problems when something goes wrong.



Scan to take a quiz and learn how your interests align with San Diego jobs!

#mynextmove

Sample occupations

How much will I earn per hour?

Entry level 10th percentile Mid-career 50th percentile Experienced 90th percentile

What level of education is expected by employers?

R Realistic	The Doers People who enjoy working outdoors and have athletic or mechanical abilities	Radiologic Technologists take X-rays and CAT scans as well as other medical images.	\$24 — \$41 — \$57	2 caps
I Investigative	The Thinkers People who use investigative and analytics skills to gather facts	Family and General Practitioners are physicians who diagnose, treat and help prevent diseases and injuries that commonly occur in the general population.	\$30 — \$87 — \$157	5 caps
A Artistic	The Creators People who prefer to work in creative, unstructured settings and use their artistic abilities	Substance Abuse, Behavioral Disorder, and Mental Health Counselors work with individuals with mental, emotional or substance abuse challenges. They conduct individual and group therapy, crisis intervention, case management, client advocacy, prevention and education.	\$12 — \$21 — \$39	4 caps
S Social	The Helpers People who enjoy working with others	Counseling Psychologists assess and evaluate individuals' problems through the use of case history, interviews and observation and provide individual or group counseling services.	\$21 — \$44 — \$90	5 caps
E Enterprising	The Persuaders People who like to lead and influence others to work towards organization goals	Clinical Nurse Specialists plan, direct or coordinate medical and health services in hospitals, clinics, managed care organizations, public health agencies or similar organizations.	\$30 — \$48 — \$64	4 caps
C Conventional	The Organizers People who enjoy working with data, keeping organized, and using their numerical abilities	Insurance Claims and Policy Processing Clerks obtain information from insured or designated persons for the purpose of settling claims with insurance carriers.	\$11 — \$19 — \$27	1 cap

4 caps Doctoral degree

3 caps Master's or professional degree

2 caps Bachelor's degree

1 cap Associate degree or certificate

0 caps High school diploma or less

Educational levels are typical but not meant to mean they are the minimum requirement.

To explore, visit workforce.org/mynextmove



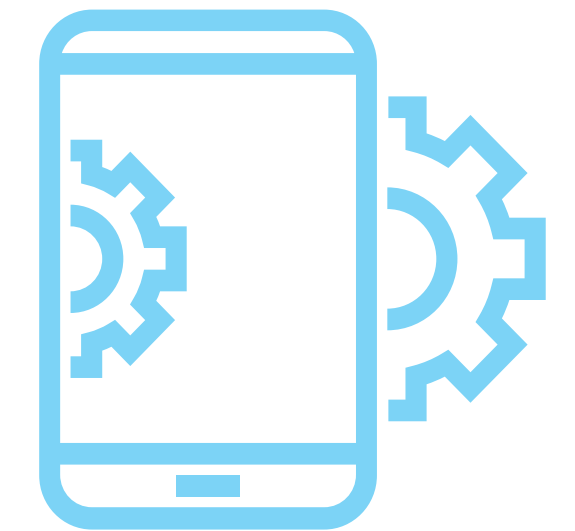
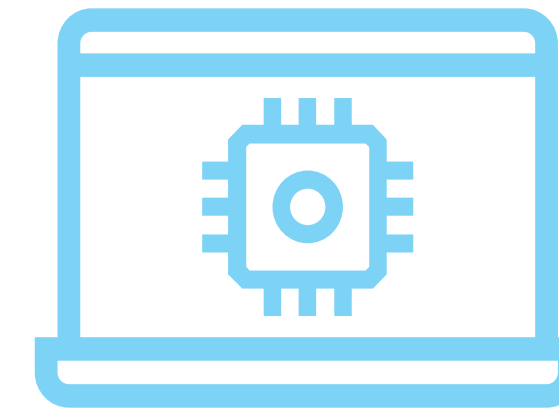
Information & Communication Technologies and Digital Media

A PRIORITY SECTOR in San Diego County



San Diego Workforce Partnership

This sector calls for people to use their creativity to code the latest cutting-edge computer program, launch the newest top trending app or design the next iconic logo.



Sample occupations

How much will I earn per hour?

Entry level 10th percentile Mid-career 50th percentile Experienced 90th percentile

What level of education is expected by employers?

Personality Type	Description	Sample Occupation	Entry level 10 th percentile	Mid-career 50 th percentile	Experienced 90 th percentile	Education Level
R Realistic	The Doers People who enjoy working outdoors and have athletic or mechanical abilities	Software Developers, Applications develop, create computer applications, software or programs. They analyze user needs and develop software solutions.	\$34	\$53	\$77	3 caps
I Investigative	The Thinkers People who use investigative and analytics skills to gather facts	Computer Network Architects design and implement computer and information networks, such as local area networks (LAN), wide area networks (WAN), intranets, extranets and other data communications networks.	\$33	\$60	\$101	4 caps
A Artistic	The Creators People who prefer to work in creative, unstructured settings and use their artistic abilities	Technical Writers write technical materials, such as equipment manuals, appendices or operating and maintenance instructions.	\$25	\$33	\$50	2 caps
S Social	The Helpers People who enjoy working with others	Instructional Coordinators develop instructional material and educational content for specialized fields that provide guidelines to educators and instructors for developing course material.	\$20	\$32	\$58	4 caps
E Enterprising	The Persuaders People who like to lead and influence others to work towards organization goals	Management Analysts conduct studies and evaluations, design systems and procedures and prepare operations manuals to assist management in operating more efficiently and effectively.	\$22	\$39	\$73	3 caps
C Conventional	The Organizers People who enjoy working with data, keeping organized, and using their numerical abilities	Database Administrators administer, test and coordinate changes to databases. They plan, coordinate and implement security measures to safeguard computer databases.	\$27	\$48	\$71	3 caps

🎓🎓🎓🎓 Doctoral degree 🎓🎓🎓 Master's or professional degree 🎓🎓 Bachelor's degree 🎓 Associate degree or certificate 🎓 High school diploma or less

Educational levels are typical but not meant to mean they are the minimum requirement.

To explore, visit workforce.org/mynextmove



Life Sciences & Biotechnology

A PRIORITY SECTOR in San Diego County



San Diego Workforce Partnership

Have you ever dreamed of being a super hero? People in this sector work daily to fuse together the power of life science and evolving technology to save lives and enhance quality of life.



Scan to take a quiz and learn how your interests align with San Diego jobs!

#mynextmove

Sample occupations

How much will I earn per hour?

Entry level 10th percentile Mid-career 50th percentile Experienced 90th percentile

What level of education is expected by employers?



The Doers | People who enjoy working outdoors and have athletic or mechanical abilities

Molecular and Cellular Biologists research and study cellular molecules and organelles to understand cell function and organization.



The Thinkers | People who use investigative and analytics skills to gather facts

Chemists conduct chemical analyses or experiments in laboratories for quality or process control or to develop new products or knowledge.



The Creators | People who prefer to work in creative, unstructured settings and use their artistic abilities

Biochemists and Biophysicists study the chemical composition or physical principles of living cells and organisms, their electrical and mechanical energy and related phenomena.



The Helpers | People who enjoy working with others

Medical Assistants perform administrative duties and maintain medical records for patients. They take and record vital signs and medical histories, preparing patients for examination, drawing blood and administering medications.



The Persuaders | People who like to lead and influence others to work towards organization goals

Financial Managers plan, direct and coordinate accounting, investing, insurance and other financial activities of a branch, office or department of a research firm.



The Organizers | People who enjoy working with data, keeping organized, and using their numerical abilities

Medical and Clinical Laboratory Technicians perform routine medical laboratory tests for the diagnosis, treatment and prevention of disease. May work under the supervision of a medical technologist.



Doctoral degree

Master's or professional degree

Bachelor's degree

Associate degree or certificate

High school diploma or less

Educational levels are typical but not meant to mean they are the minimum requirement.

To explore, visit workforce.org/mynextmove



Public Administration

A PRIORITY SECTOR in San Diego County



San Diego Workforce Partnership

People in this sector solve problems through their research, analysis, leadership and public service. They listen to concerns, collaborate with others and respond to the community with a goal of improving people's lives.



Scan to take a quiz and learn how your interests align with San Diego jobs!

#mynextmove

Sample occupations

How much will I earn per hour?

Entry level 10th percentile Mid-career 50th percentile Experienced 90th percentile

What level of education is expected by employers?

Interest Type	Description	Entry level 10 th percentile	Mid-career 50 th percentile	Experienced 90 th percentile	Education Level
R Realistic	The Doers People who enjoy working outdoors and have athletic or mechanical abilities	\$20	\$33	\$48	High school diploma or less
I Investigative	The Thinkers People who use investigative and analytics skills to gather facts	\$41	\$46	\$68	Bachelor's degree
A Artistic	The Creators People who prefer to work in creative, unstructured settings and use their artistic abilities	\$11	\$25	\$45	High school diploma or less
S Social	The Helpers People who enjoy working with others	\$17	\$27	\$40	High school diploma or less
E Enterprising	The Persuaders People who like to lead and influence others to work towards organization goals	\$28	\$63	\$155	Bachelor's degree
C Conventional	The Organizers People who enjoy working with data, keeping organized, and using their numerical abilities	\$15	\$23	\$31	High school diploma or less

🎓🎓🎓🎓 Doctoral degree 🎓🎓 Master's or professional degree 🎓🎓 Bachelor's degree 🎓 Associate degree or certificate 🎓 High school diploma or less

Educational levels are typical but not meant to mean they are the minimum requirement.

To explore, visit workforce.org/mynextmove