

Fostering regional competitiveness for our businesses

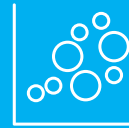


**SOUTHERN
BORDER
REGION**

Creating economic mobility for our workforce

Our Region

San Diego and Imperial County



Structure

- 3,535,349 population
- 9,008 sq. miles
- Shared border with Mexico
- 8 AJCC offices
 - 2 Satellites
 - 2 job centers in detention facilities
- 6 Youth Providers



Sectors

- Healthcare
- Information Communications Technology
- Life Sciences
- Advanced Manufacturing
- Clean Energy



Clients

- 19,800 adults served
- 9,800 youth served
- 4,700 placements
- 520+ companies served
- 5,500 laid off workers supported
- \$1.8M in wage reimbursement



*#'s are for last program year

Agenda

- Introductions
 - Regional Partners
 - Regional and Local Plan Development
 - Workforce Development in the Southern Border Region
- Special Populations
 - Reentry
 - CalFresh
 - LCS
 - ELL
- Q+A Session

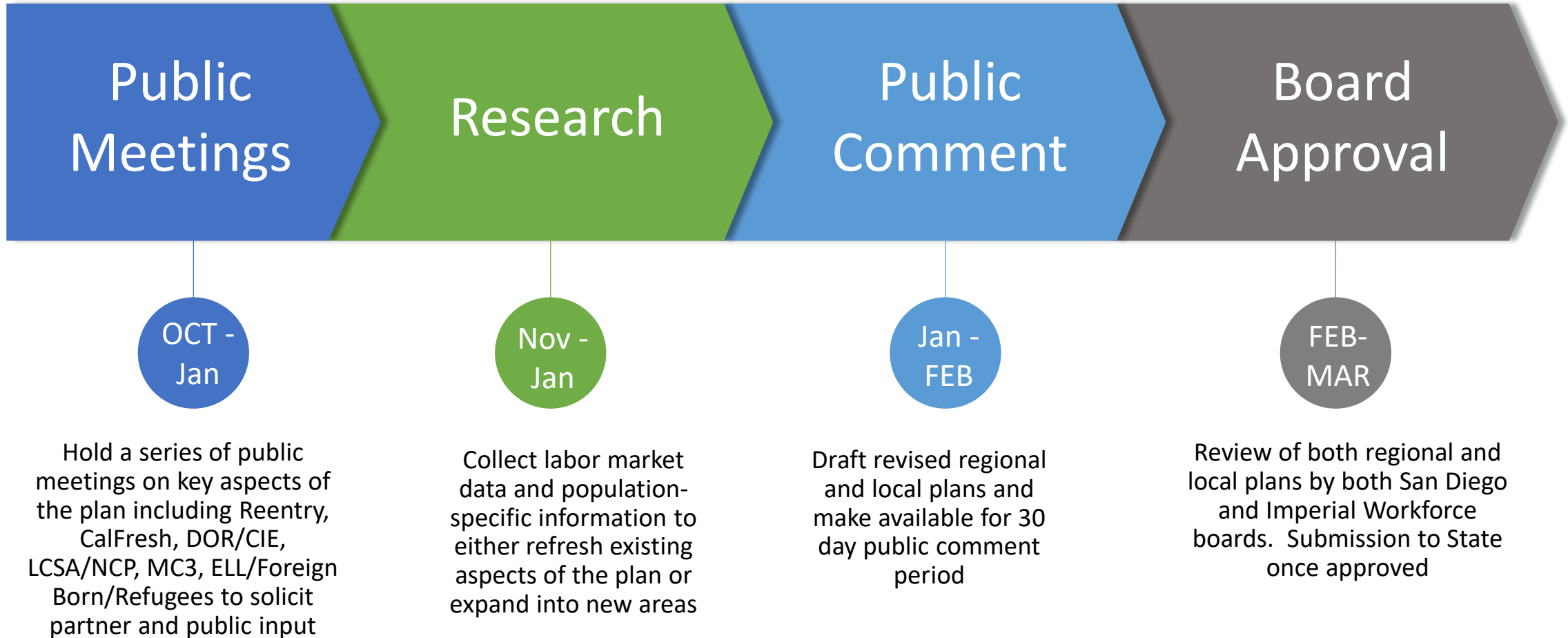
Regional Partners

Current and Planned

Current (As of 2017)	Planned (Being incorporated in 2019 Revision)
Education: San Diego and Imperial County Community College Association (SDICCA) – includes all community colleges, San Diego State, University of California San Diego, San Diego Imperial Adult Education Consortium (Super Region – includes all adult education), San Diego and Imperial County Offices of Education, Poway Unified School District	Reentry: California Department of Corrections and Rehabilitation (CDCR), Probation and California Prison Industry Authority (CalPia)
Workforce: Employment Development Department (EDD), San Diego Workforce Partnership, Imperial County Workforce Board, Jacobs Center	Community Based Organizations: Organizations serving populations outlined in the plan
Economic Development: East County Economic Development Council, San Diego Regional Economic Development Council, San Diego Association of Governments, Imperial Valley Economic Development Corporation, Chamber of Commerce	English Language/Refugees/New Citizens: California Immigrant Policy Center
Social Services: CALWorks, Department of Rehabilitation	Social Services: County Human Services, Local Child Support Agencies

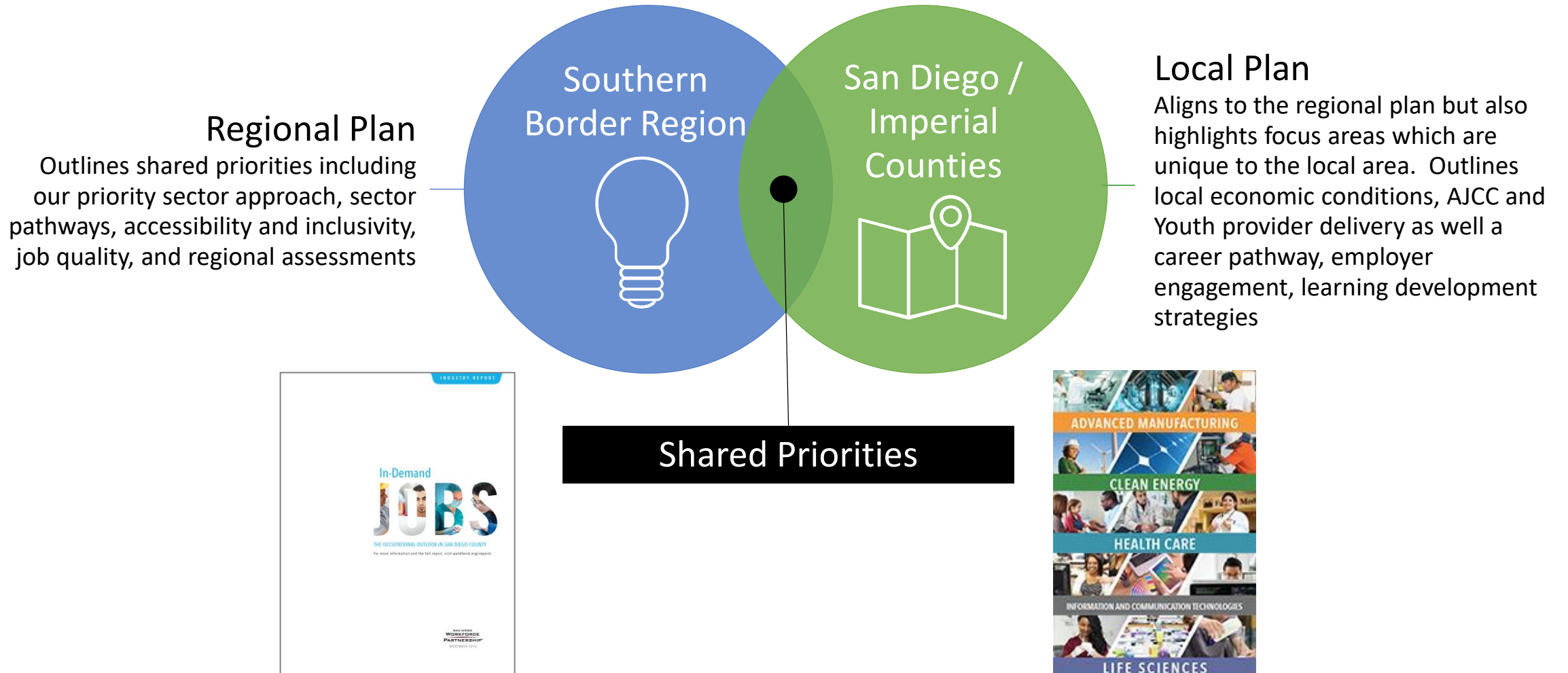
Process and Timeline

Regional and Local Plan Development



Synopsis of the Prior Plan

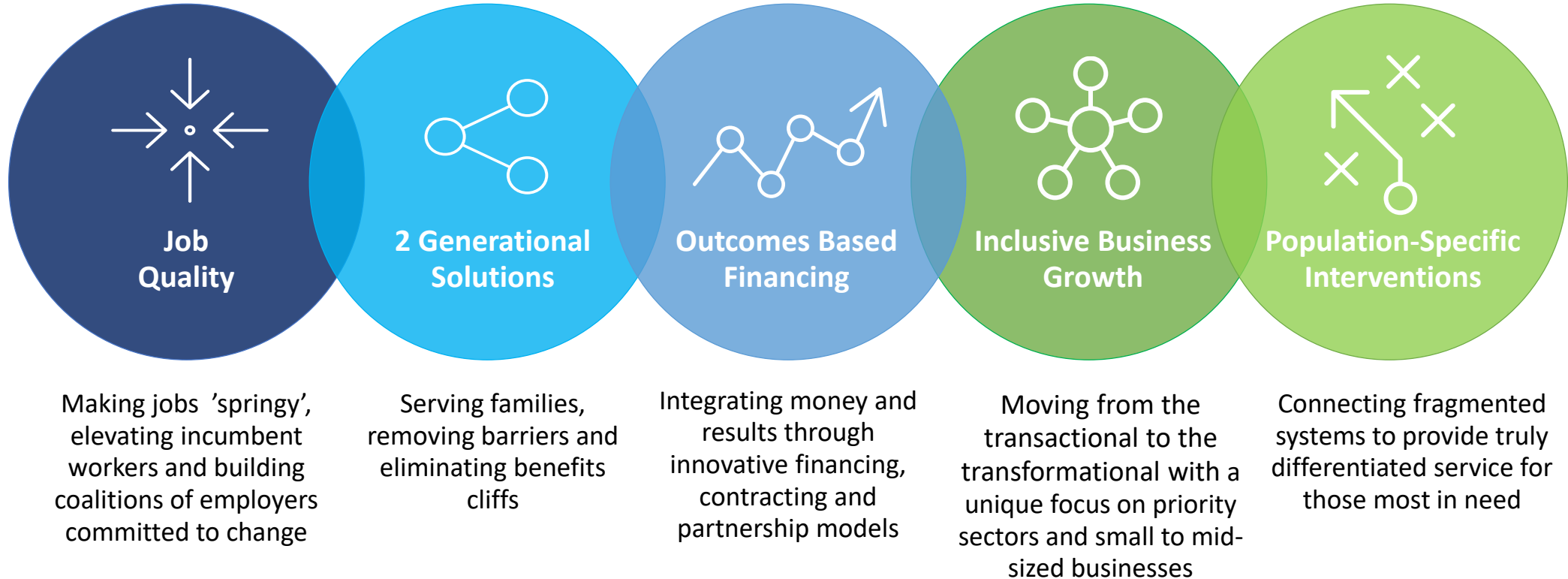
Current and Planned



Workforce Development in the Southern Border

The Way Ahead

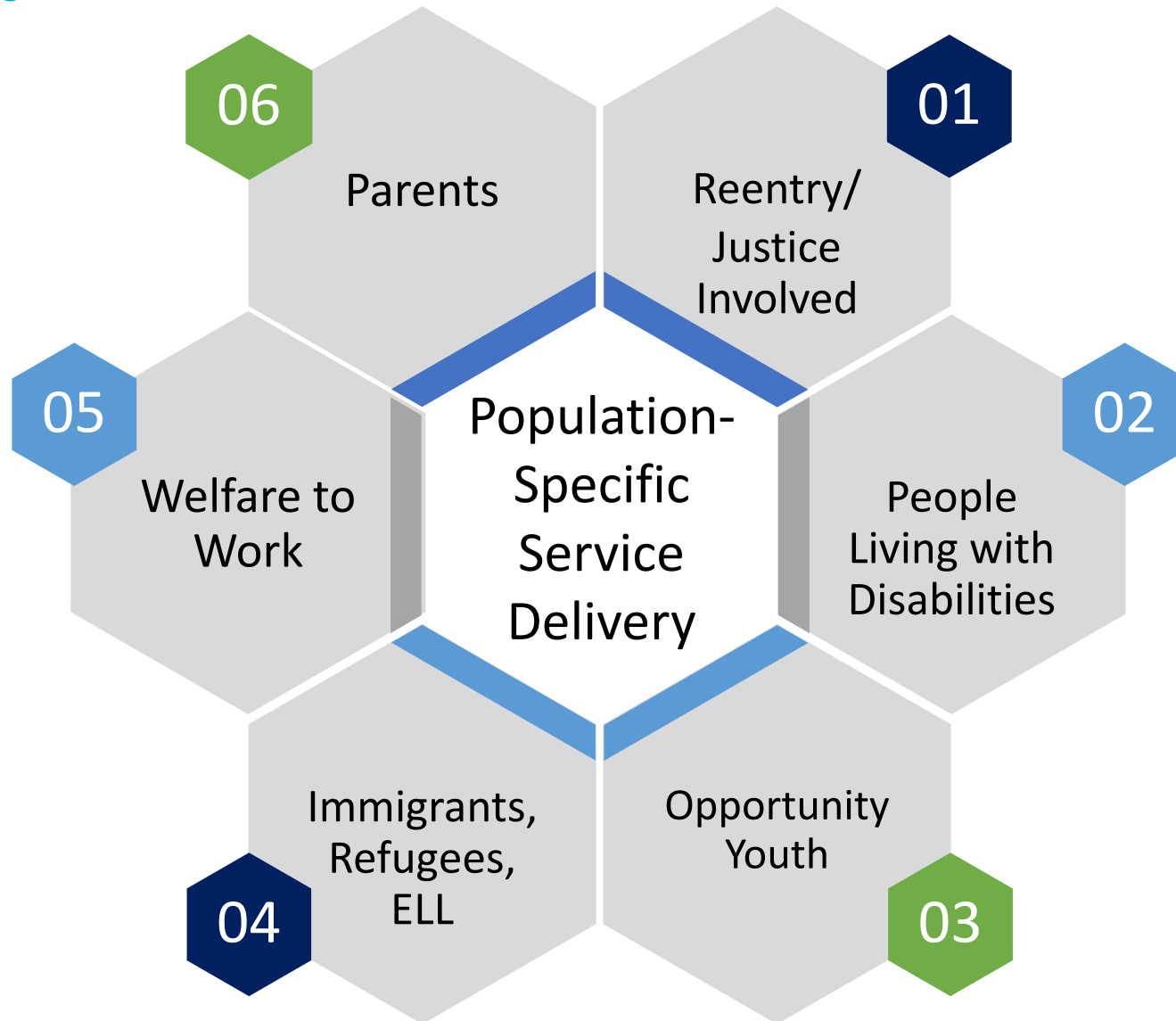
Vision: Economic mobility for our citizens and vibrant growth for our businesses



The SBR believes it is our responsibility to tackle even the toughest challenges which stand in the way of economic mobility and growth for our community.

Special Populations

Planned Projects



ELL/ Refugees

According to CA Workforce Development Board, one in three people in California's workforce are foreign born and/or struggle with language proficiency

Need to create stronger ties between existing adult education system, community-based organizations (CBOs) and workforce development

SDWP's ELL Grant Program

- Funded by Workforce Accelerator 7.0 by State of California EDD
- Serves jobseekers who are immigrants, refugees or ELL
- Partners with International Rescue Committee, Grossmont Unified School District, and International Rescue Committee
- Program offers:
 - Personalized coaching,
 - Job search navigation,
 - Job Quality training
 - Credentialing programs
 - Program will also focus on raising community awareness of service sector and job quality trends.

Next Steps

- Provide any additional feedback via the input form
- Others discussed in this session?

Q&A