

Fostering regional competitiveness for our businesses



**SOUTHERN  
BORDER  
REGION**

Creating economic mobility for our workforce

# Agenda

- Introductions
- Regional Planning Overview
  - Regional Partners
  - Regional and Local Plan Development
  - Workforce Development in the Southern Border Region
  - Special Populations
- Discussion
- Q+A Session

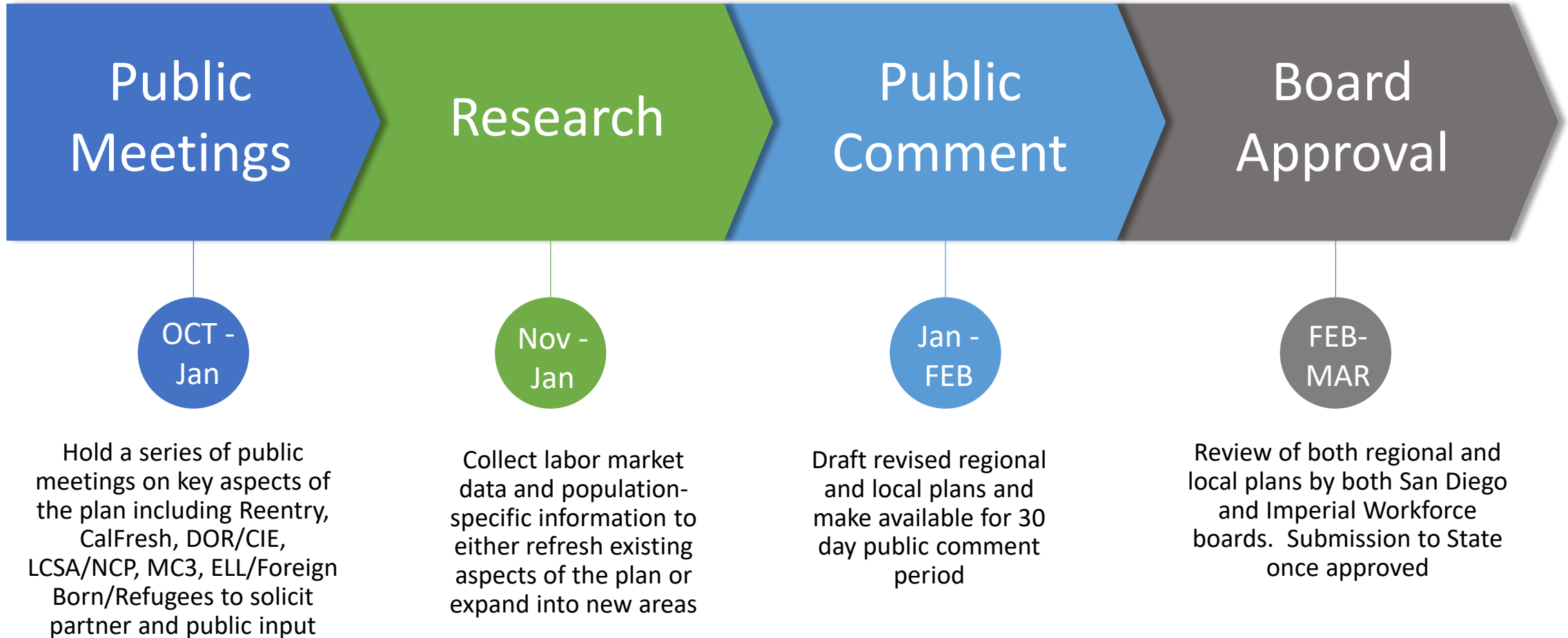
# Regional Partners

## Current and Planned

Current (As of 2017)	Planned (Being incorporated in 2019 Revision)
<b>Education:</b> San Diego and Imperial County Community College Association (SDICCA) – includes all community colleges, San Diego State, University of California San Diego, San Diego Imperial Adult Education Consortium (Super Region – includes all adult education), San Diego and Imperial County Offices of Education, Poway Unified School District	<b>Reentry:</b> California Department of Corrections and Rehabilitation (CDCR), Probation and California Prison Industry Authority (CalPia)
<b>Workforce:</b> Employment Development Department (EDD), San Diego Workforce Partnership, Imperial County Workforce Board, Jacobs Center	<b>Community Based Organizations:</b> Organizations serving populations outlined in the plan
<b>Economic Development:</b> East County Economic Development Council, San Diego Regional Economic Development Council, San Diego Association of Governments, Imperial Valley Economic Development Corporation, Chamber of Commerce	<b>English Language/Refugees/New Citizens:</b> California Immigrant Policy Center
<b>Social Services:</b> CALWorks, Department of Rehabilitation	<b>Social Services:</b> County Human Services, Local Child Support Agencies

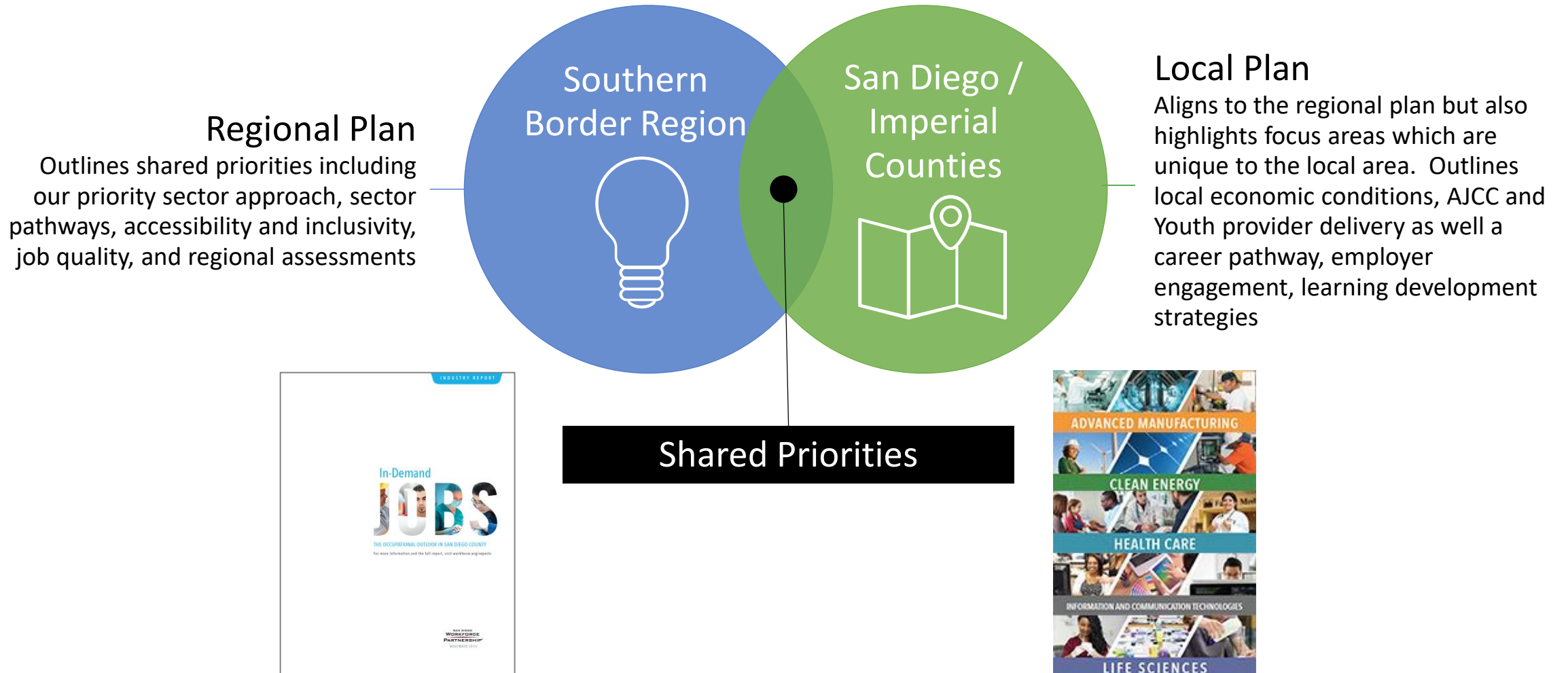
# Process and Timeline

## Regional and Local Plan Development



# Synopsis of the Prior Plan

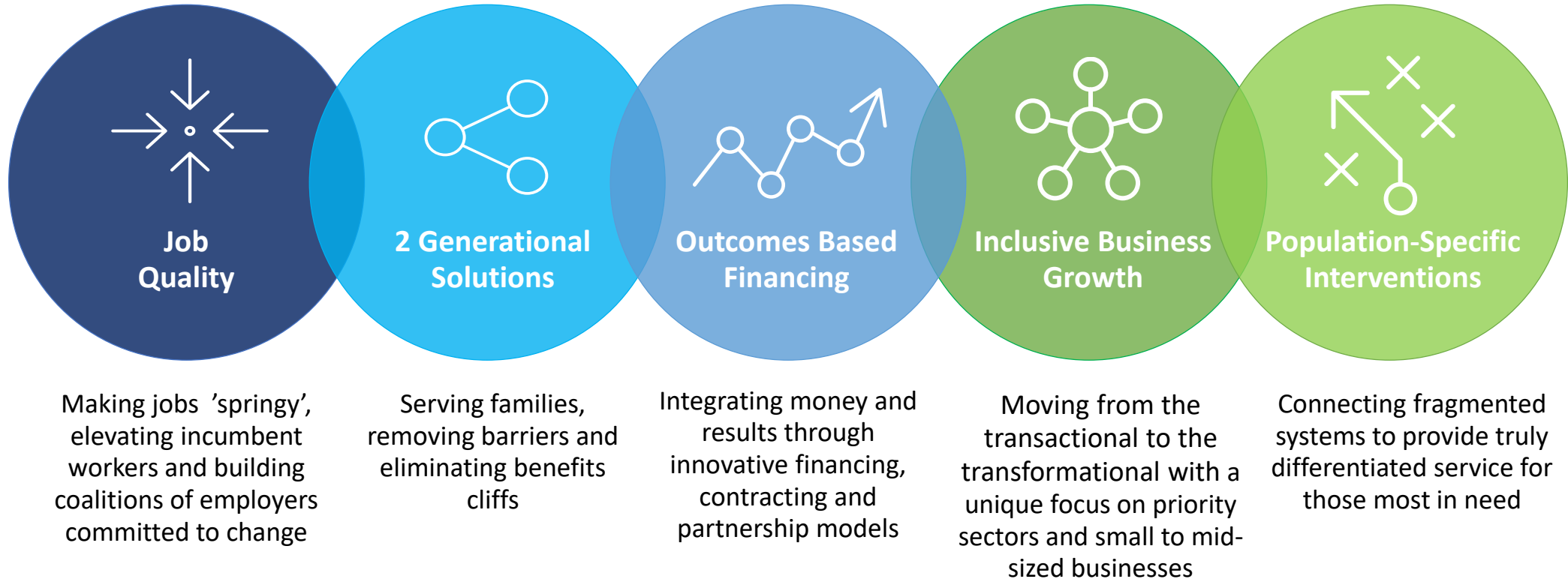
## Current and Planned



# Workforce Development in the Southern Border

## The Way Ahead

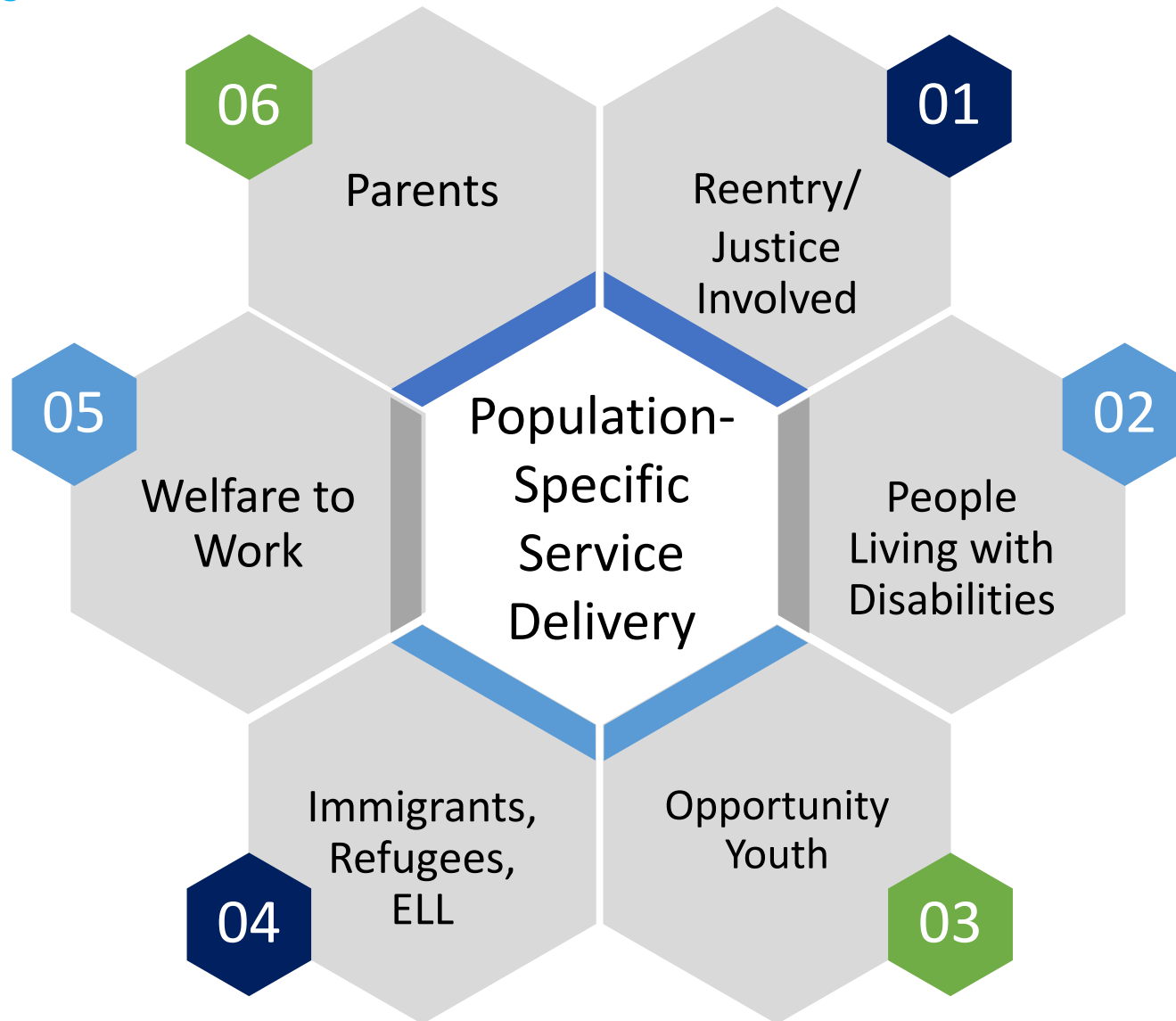
**Vision:** Economic mobility for our citizens and vibrant growth for our businesses



The SBR believes it is our responsibility to tackle even the toughest challenges which stand in the way of economic mobility and growth for our community.

# Special Populations

## Planned Projects



## Discussion

- Are there additional areas of focus that you would like to see included in the regional plan?
- Where can we further collaborate?



## Next Steps

- Submit information on your organization through the Community Input Form
- Provide feedback through the public comment process