

Fostering regional competitiveness for our businesses

**SOUTHERN  
BORDER  
REGION**

Regional and Local Planning  
Reentry

Creating economic mobility for our workforce

**SOUTHERN  
BORDER  
REGION**

# Agenda

## Regional Planning Meeting

- Introductions
  - San Diego and Imperial Team Leads
  - Attendees
- Regional Planning Process
  - Purpose of plan
  - Process and Timeline
  - Q+A
- Overview of Workforce Efforts
  - Imperial
  - San Diego
- Community/Partner Input
  - Current Program Highlights
  - Key Challenges/Gaps
  - Opportunities for Collaboration
  - Research Needs
- Next Steps

## Purpose of Plan

### SBR Regional Plan

Regional and Local Plans, informed by research and community input, lay out a collective strategy which guides SBR's investments and activities.

The plan will address the following elements:

- Vision/strategic goals
- Priority sectors
- Population-specific delivery (through AJCC and youth system)
- Business services approach
- Partner collaboration

SBR's regional and local plans are updated every few years; October 2018 marked the beginning of the latest update process.

# Synopsis of the Prior Plan

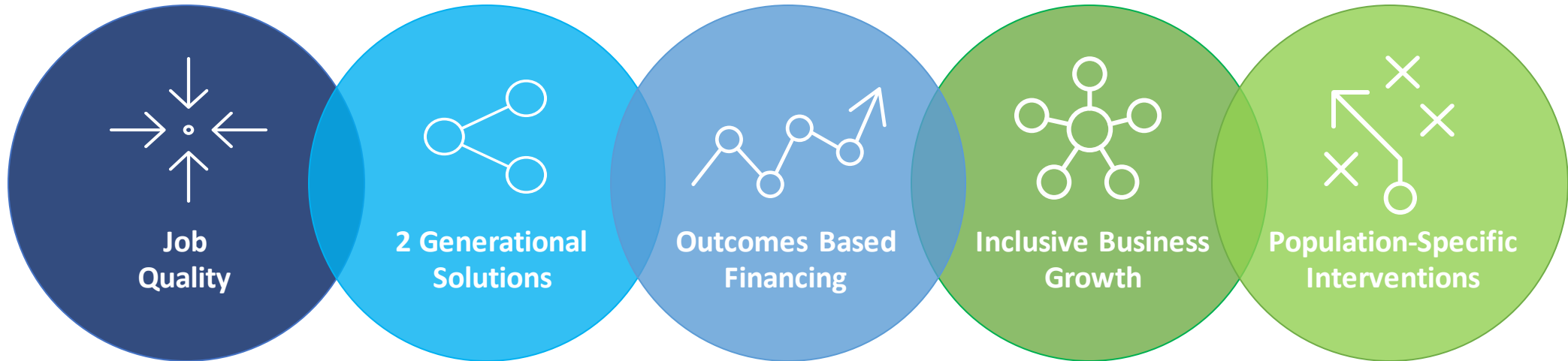
## Current and Planned



# Workforce Development in the Southern Border

## The Way Ahead

**Vision:** Economic mobility for our citizens and vibrant growth for our businesses



Making jobs 'springy', elevating incumbent workers and building coalitions of employers committed to change

Serving families, removing barriers and eliminating benefits cliffs

Integrating money and results through innovative financing, contracting and partnership models

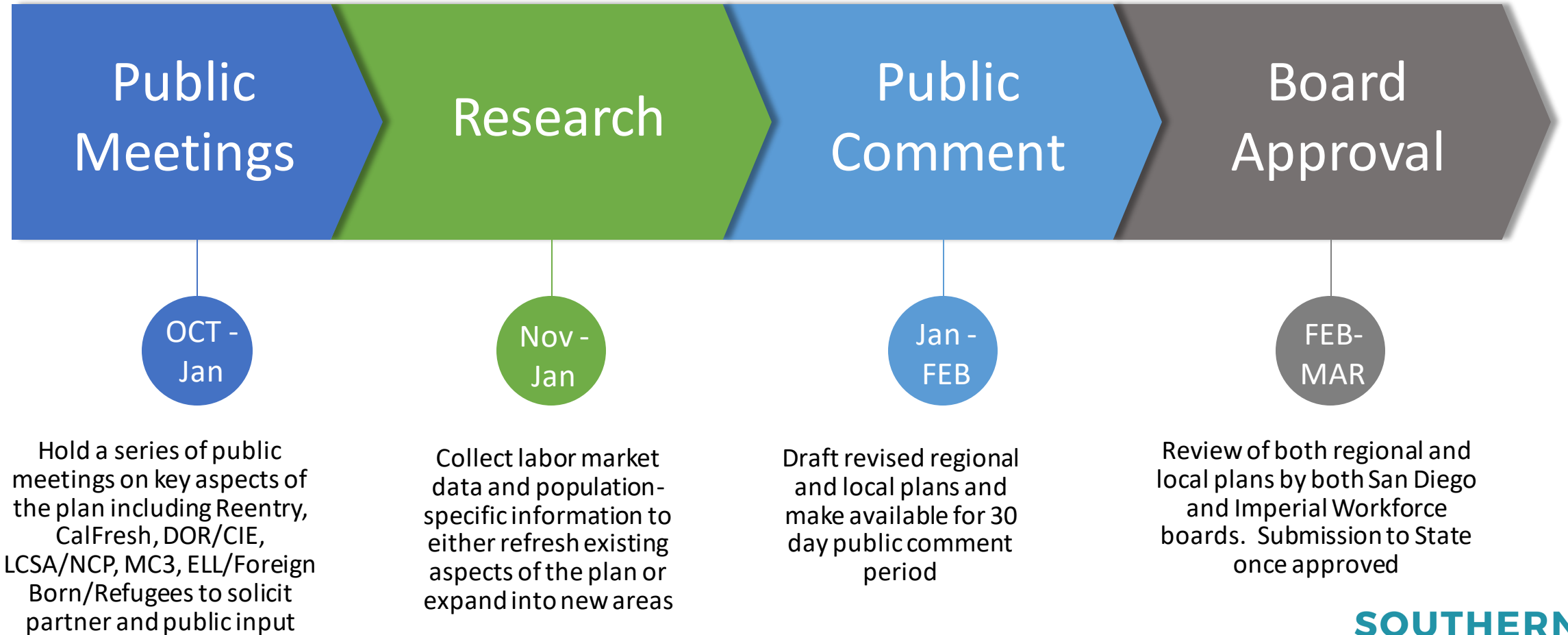
Moving from the transactional to the transformational with a unique focus on priority sectors and small to mid-sized businesses

Connecting fragmented systems to provide truly differentiated service for those most in need

The SBR believes it is our responsibility to tackle even the toughest challenges which stand in the way of economic mobility and growth for our community.

# Process and Timeline

## Regional and Local Plan Development



# Why focus on the justice-involved populations?

Aligning the reentry and workforce systems

Southern  
Border Region  
recidivism rate:

**~65%**



## Why focus on the justice-involved populations?

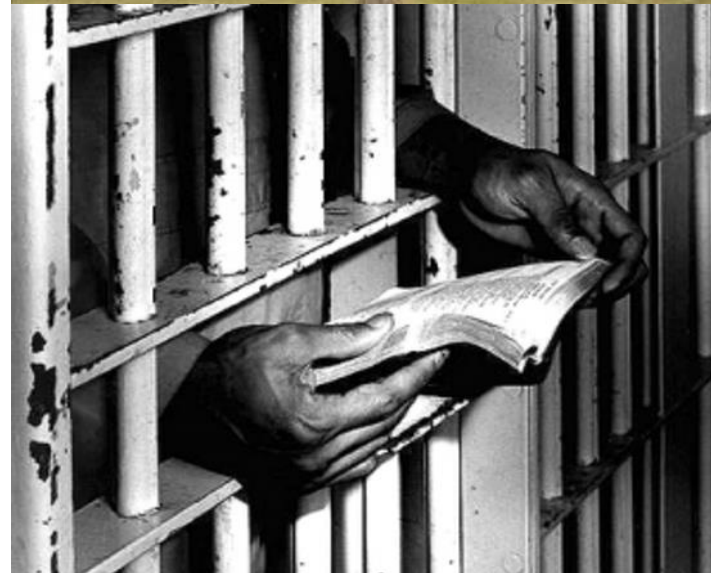
Aligning the reentry and workforce systems

**\$63,025**



**Annual cost of  
tuition, room  
and board per  
student**

**\$76,500**

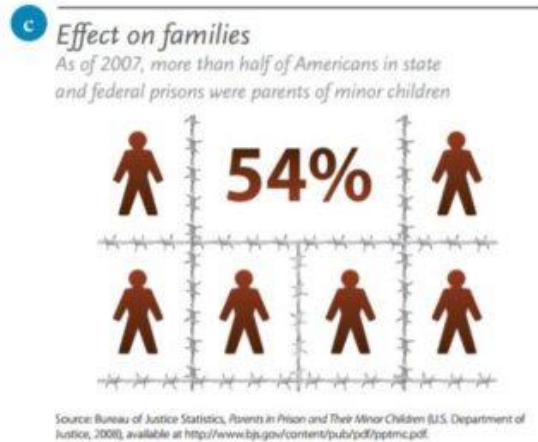
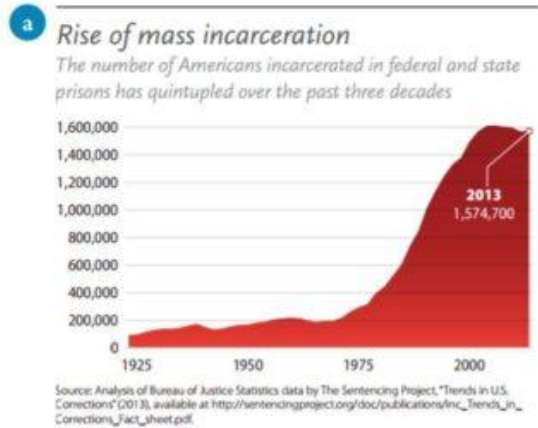


**Annual cost of  
incarceration  
per inmate**



# Why focus on the justice-involved populations?

## Aligning the reentry and workforce systems



## Those with criminal records:

- On average face 60% unemployment
- On average earn 40% less income
- Sometimes face punitive restrictions for public assistance programs like TANF/SNAP

# Overview of San Diego's Efforts

## Reentry Works – Job Centers in Jails

**VISION:** DISRUPT THE CYCLES OF INCARCERATION AND POVERTY BY EMPOWERING RETURNING CITIZENS TO FIND MEANINGFUL WORK THAT LEADS TO SELF-SUFFICIENCY.

SAN DIEGO  
**WORKFORCE  
PARTNERSHIP**<sup>®</sup>



**Second Chance**

America's **JobCenter**  
of California<sup>SM</sup>

**SOUTHERN  
BORDER  
REGION**

# San Diego's two jail-based job centers



## TARGETS:

**1,000**

Receive pre-release services

**200**

Receive intensive post-release follow-up

**22%**

Recidivism rate (no greater than)

**68%**

**Placed in Employment**

Current recidivism rate for participants:

**10%**

## Success and results

*State recidivism rate<sup>1</sup>:*

**66%**

*Objective:*

**<22%**

*Average cost of  
incarceration per inmate:*

**\$70K+**

**10%**

*only 62 of 611 inmates  
released have recidivated<sup>2</sup>*

*Average cost of  
Reentry Works per inmate:*

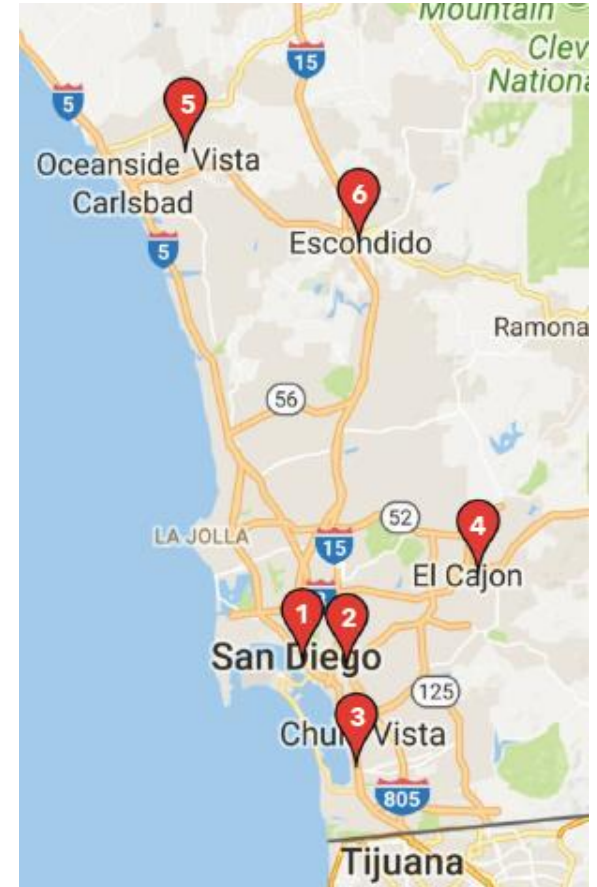
**\$650**

## New Beginnings workshop at community-based career centers

- 5-day intensive workshop
- Tailored job skills for individuals with criminal history
- At South Metro Career Center
- 54 graduates
- 90% employed

America's **JobCenter**  
of California<sup>SM</sup>

**K R A** CORPORATION  
Innovative  
Exceptional  
Trusted



**SOUTHERN  
BORDER  
REGION**

# Reentry Services Imperial County

## GEO Reentry Services

- Wednesdays 9:00 am
- Fridays 11:00 am
  - Explanation of Services
  - Jobseeker services, recruitment events and Job listings



## Day Reporting Center (DRC) Collaboration Meeting & Community Corrections Partnership (CCP)

- Community agencies meet to discuss agenda items to be approved to provide services to incarcerated and formerly incarcerated individuals.
- Collaboration Meeting to discuss ways to improve collaboration between community agencies to better provide reentry services.

## Probation Department & County Jail

- Individual referrals to AJCC from Probation Department for one-on-one services and assistance.
  - Employment Application & Resume development
  - Job Readiness Workshops
  - Mock Interviews
- Presentations to group of incarcerated individuals participating in an OSHA certification class, in regards to workforce services and pathways to careers.



# California Department of Corrections and Rehabilitation (CDCR)

- Centinela State Prison Provider Fair
  - Quarterly Provider Fair
- Parole And Community Team (PACT)
  - Community resource fair for State of California Parolee

## Partner Highlights – Let's hear from you!

Please share an overview of the work your organization supports, with key highlights such as:

- General overview
- Scope of project (# of participants, total funding, timing)
- Biggest successes and challenges
- Opportunities for further collaboration
- Research needs

## Next Steps

- Provide any additional feedback via the input form
- Participate in the public comment period
- Others discussed in this session?